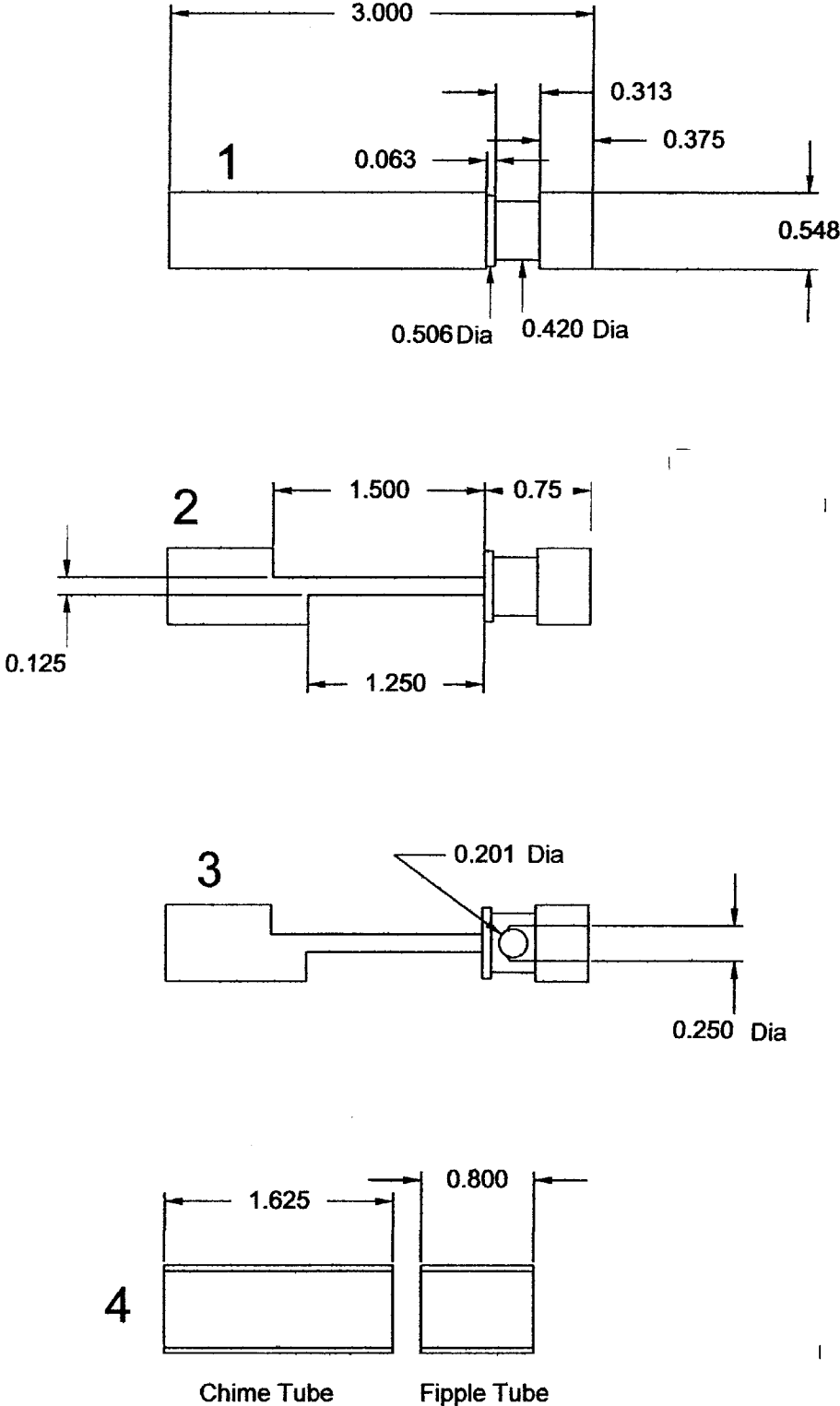
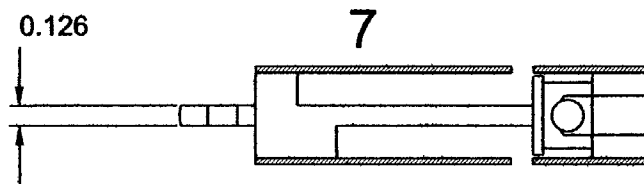
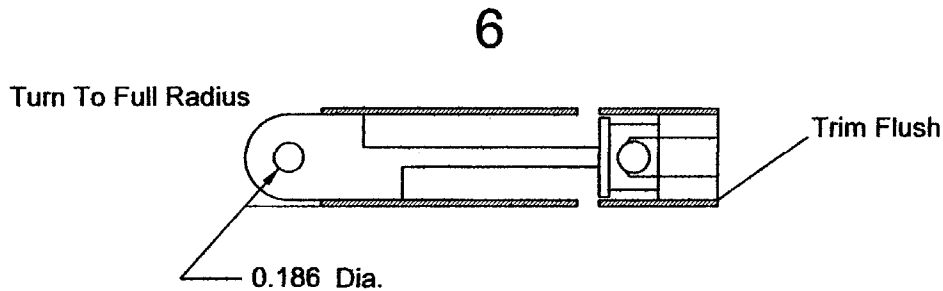
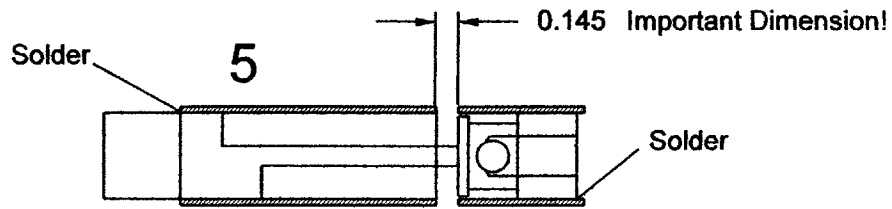


New England Model Engineering Society

www.neme-s.org





Designed by Stev Lovely of the New England Model Engineering Society.

Re-drawn for clarity by Errol Groff of the New England Model Engineering Society

When I make these whistles I assemble them using .032 diameter solder from Radio Shack. We use brass for the core and 1/2" copper tubing (BLUE Label) from Home depot or any other home supply store.

If you use red lable tubing all diameter dimensions will have to be modified as necessary.

Other fellows have made this design using an aluminum core with copper chime and fipple tube. In this case it is necessary to make the parts to a tight press fit. The chime tube must be airtight on the core for the whistle to work properly.

We hope that ou enjoy making and using this whistle. It is very loud and sure to annoy everyone around you!

Errol Groff 9 January 2006