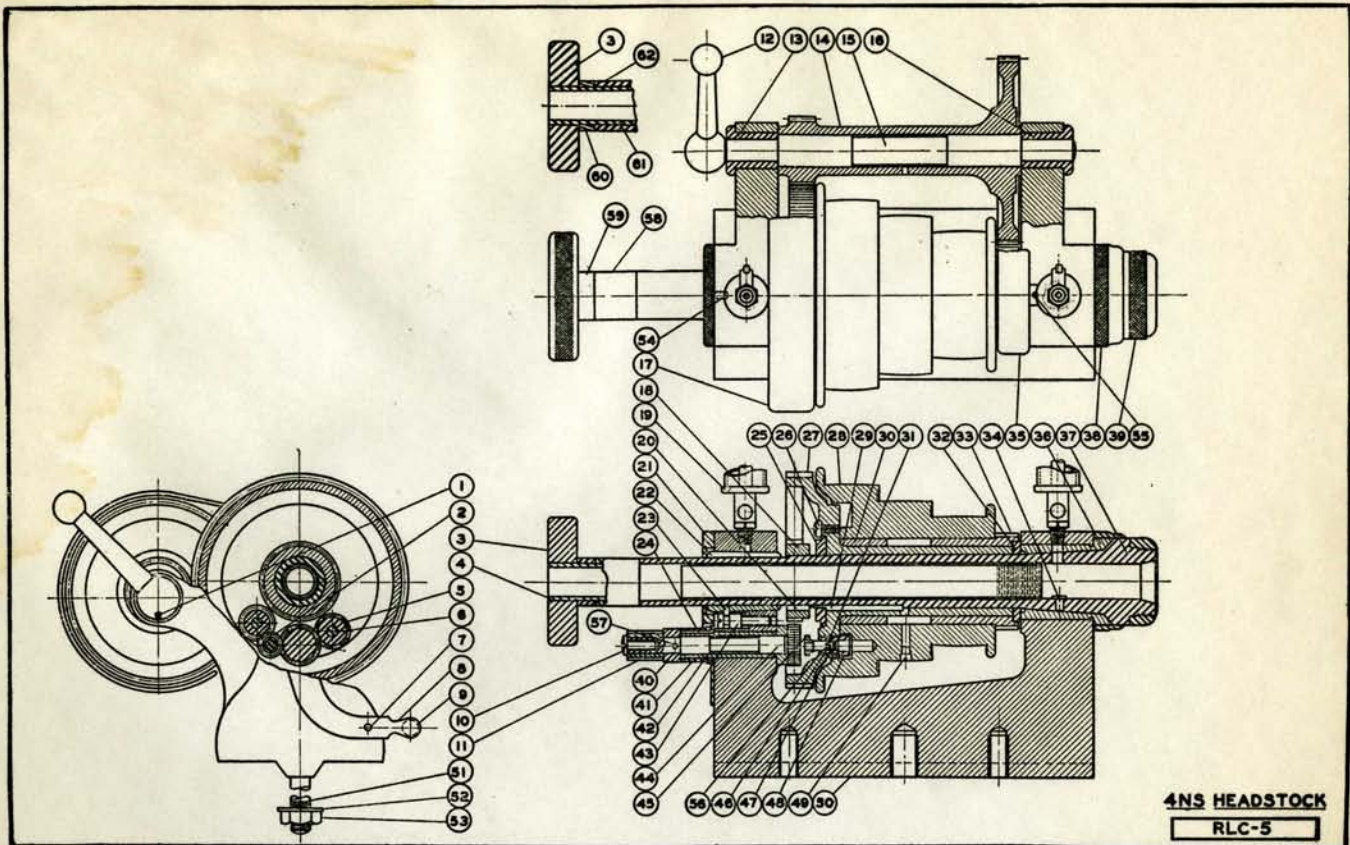


RIVETT LATHE & GRINDER INC.

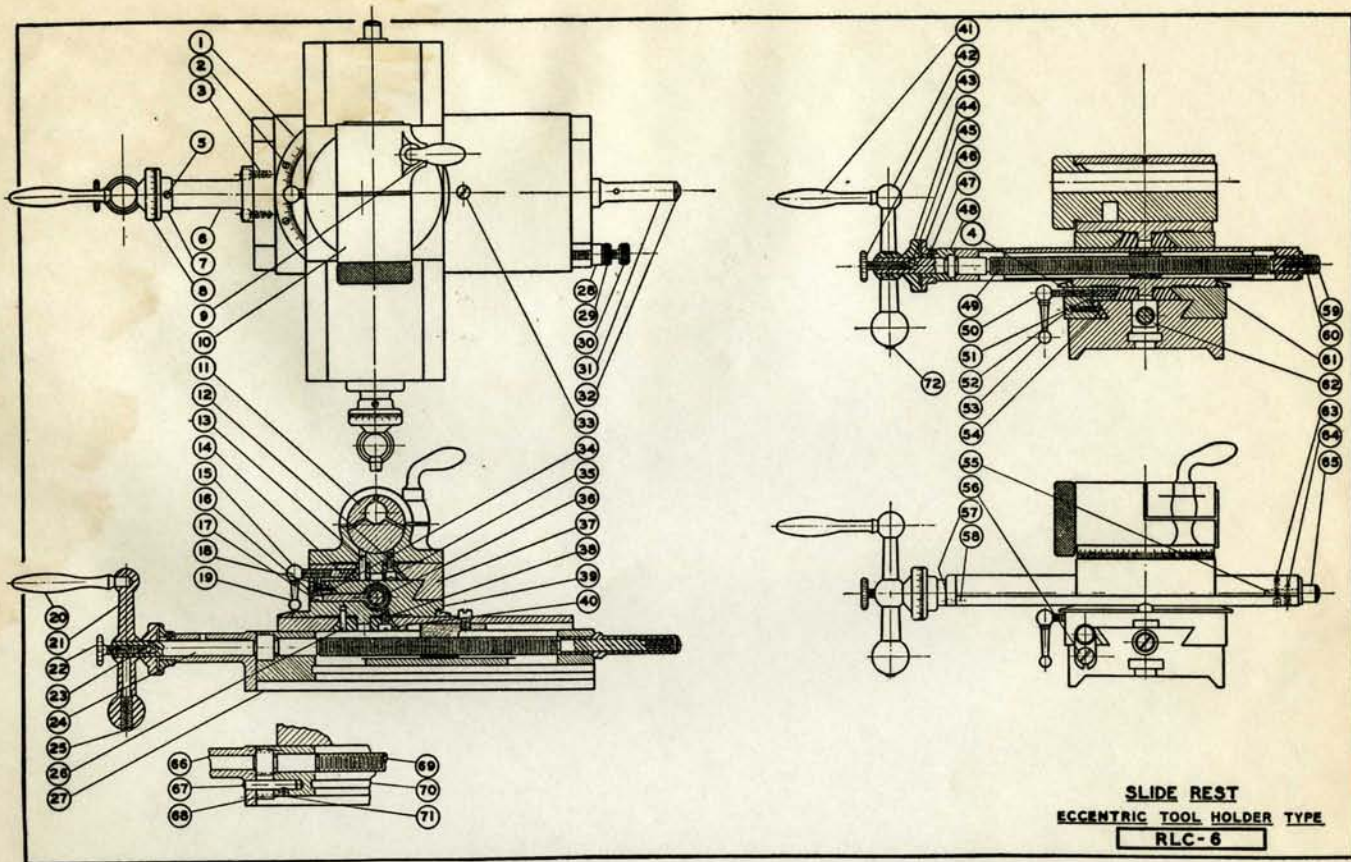


4NS HEADSTOCK
RLC-5

PARTS LIST

Reference Number	Symbol	Name of Part	Reference Number	Symbol	Name of Part
1	608-12-640	Bushing set screw	32	608-12-473	Spacer
2	607-12-228	Switch gear (12 T)	33	608-12-226	Pulley gear
3	103-12-292	Draw-in spindle knob	34	506-12-297	Spindle key
4	608-12-467A	Draw-in spindle	35	608-12-251	Gear guard (right)
5	607-12-227	Switch gear (18 T)	36	103-12-117	Front bearing
6	607-12-498	Switch gear stud	37	608-12-466	Headstock spindle
7	607-12-354	Switch lever pin	38	103-12-419	Front dust ring
8	606-12-303	Switch lever	39	103-12-251	Spindle nose guard
9	LOJ-257	Lever Handle	40	606-12-190	Switch gear collar
10	608-12-641	Stud gear retain. screw	41	606-12-155	Switch lever bushing
11	607-12-230	Stud gear (15 T)	42	608-12-634	Switch
12	607-12-231	Stud gear (24 T)	43	103-12-638	Rear bearing adjusting screw
13	608-12-302	Gear shaft lever	44	608-12-229	Switch gear (22T)
14	608-12-154	Gear shaft bushing (rear)	45	608-12-329	Stop pin nut
15	608-12-230	Back gear	46	608-12-361	Locating pin
16	608-12-440	Back gear shaft	47	608-12-360	Pulley stop pin
17	608-12-153	Gear shaft bushing (front)	48	608-12-152	Stop pin bushing
18	608-12-252	Gear guard (left)	49	103-17-639	Oil screw
19	608-12-228	Spindle gear	50	608-12-270	Headstock
20	608-12-238	Blanchard oil cup #100-1	51	608-12-498	Binder stud
21	504-12-419	Spindle gear key	52	WH-748	Binder bolt washer
22	103-12-118	Rear dust ring	53		Binder bolt nut
23	103-12-117	Rear bearing	54	SF-1021	Rear dust cap screw
24	103-12-287	Rear bearing key	55	SF-1019	Gear guard screw
25	606-12-239	Lever key	56	608-12-479	Locating pin spring
26	608-12-330	Driving gear check nut	57		Collar pin
27	608-12-642	Check nut set screw	58	608-12-189	Loose Collar
28	608-12-227	Driving gear	59	608-12-188A	Draw-in spindle collar
29	608-12-390	Pulley	60	608-12-188B	Draw-in spindle collar for quick change gear box
30	608-12-287	Driving gear key	61	608-12-467B	Draw-in spindle for quick change gear box
31	608-12-151	Pulley bushing	62	608-12-188C	Loose Collar
	SH-1032	Locating pin screw			

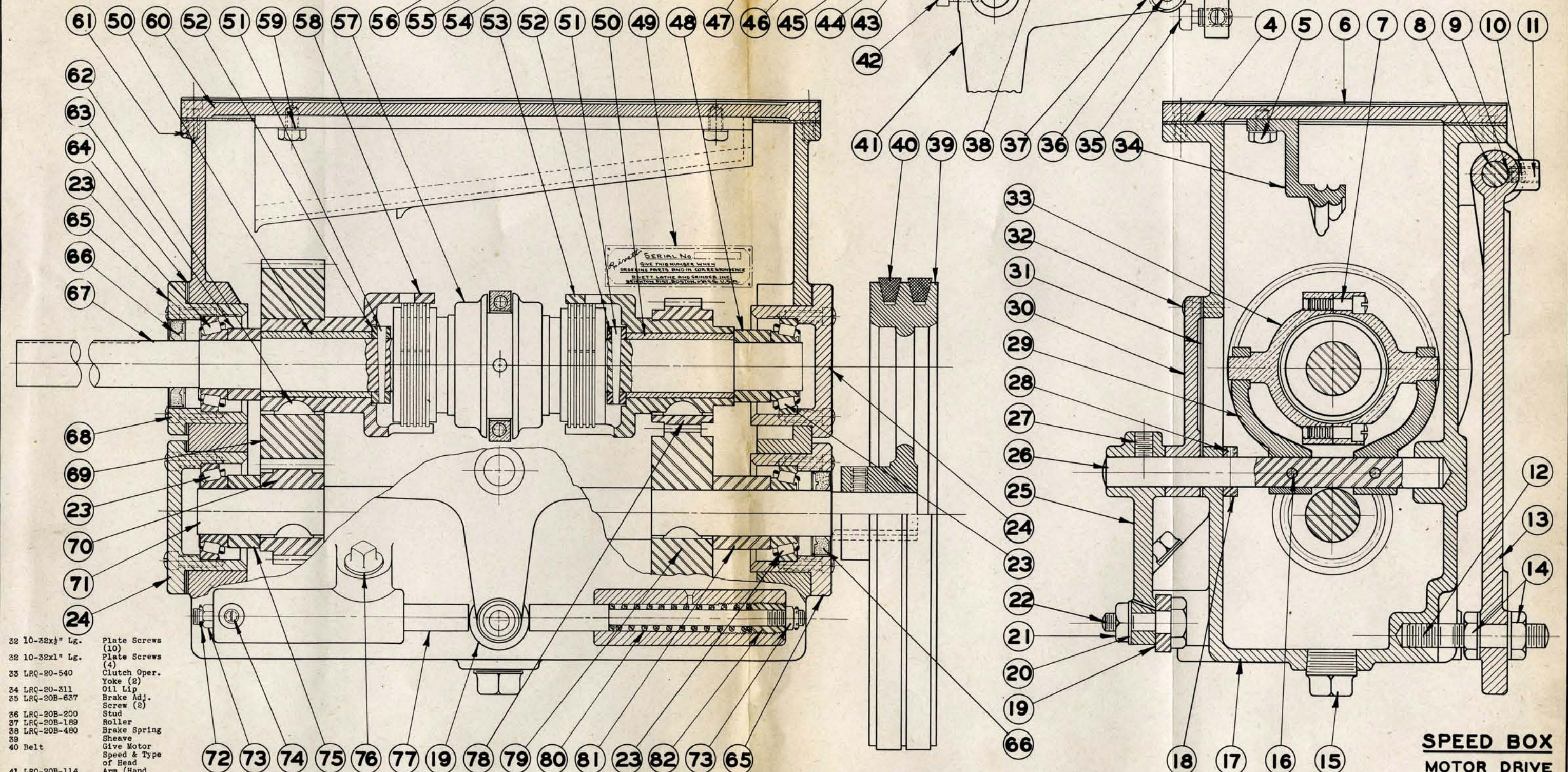
RIVETT LATHE & GRINDER INC.



PARTS LIST

Reference Number	Symbol	Name of Part	Reference Number	Symbol	Name of Part
1	505-9-193	Lower swivel graduated ring	37	505-9-461	Top slide
2		#4-40 x 1/4" Fil head screw "r"	38	506-9-946	Lower swivel cone screw
3	506-9-641	Bearing plate screw	39	505-9-504	Lower swivel
4	506-9-354	Gib pin	40	506-9-187	Lower swivel cone
5	506-9-639	Indicator flange set screw	41	LH4-260	Feed screw handle for top slide
6	505-9-374	Feed screw bearing plate	42	506-9-263	Feed screw ball handle for top
7	506-9-217	Indicator flange	43	506-9-647	Dial binder screw
8	506-9-193	Feed screw dial	44	506-9-193	Feed screw dial
9	505-9-128	Tool holder binder	45	506-9-127	Feed screw dial binder
10	506-9-503	Top swivel	46	506-9-217	Indicator flange
11	506-9-274	Eccentric tool holder	47	506-9-639	Indicator flange set screw
12	506-9-648	Top swivel cone screw	48	505-9-568	Indicator flange support
13	506-9-358	Top swivel cone pins	49	505-9-557	Top slide feed screw
14	506-9-245	Top swivel cone gib	50	505-9M-557	Top slide feed screw, metric
15	506-9-129	Top swivel cone gib binder	51	506-9-130	Lower swivel cone gib binder
16	506-9-646	Top slide gib screw	52	506-9-248	Lower swivel cone gib
17	506-9-637	Top slide feed screw nut screw	53	506-9-644	Bottom slide gib screw
18	505-9-246	Top slide gib	54	506-9-259	Lower swivel cone gib binder handle
19	506-9-258	Top swivel cone gib screw handle	55	506-9-247	Lower slide gib
20	506-9-260	Feed screw handle for bottom slide	56	506-9-134	Lower swivel block
21	506-9-261	Feed screw ball handle for bottom	57	506-9-947	Stop block screw
22	506-9-647	Dial binder screw	58	506-9-646	Indicator flange supporting screw
23	506-9-127	Feed screw dial binder	59	506-9-357	Indicator flange supporting pin
24	505-9-556	Bottom slide feed screw	60	506-9-638	Feed screw adj. screw
25	505-9M-556	Bottom slide feed screw, metric	61	506-9-287	Feed screw sleeve key
26	506-9-642	Ball handle ret. screw for bottom	62	505-9-462	Bottom slide
27	506-9-355	Lower swivel cone pin	63	505-9-325	Bottom slide feed screw nut
28	505-9-115	Base	64	505-9M-325	Bottom slide feed screw nut, metric
29	506-9-133	Bottom slide stop block	65	506-9-199	Lower swivel block screw
30	506-9-328	Bottom slide stop screw check nut	66	506-9-650	Lower swivel block dowel
31	506-9-643	Bottom slide stop screw	67	505-9-456	Top slide feed screw sleeve
32	506-9-457	Bottom slide feed screw sleeve	68	505-9-374	Feed screw bearing plate
33	506-9-638	Feed screw adj. screw	69	106-20-356	Intermediate gear pin
34	506-9-645	Bottom slide feed screw nut screw	70	608-9-226	Lower feed screw int. gear
35	103-16-199	Top slide gib pin	71	608-9-558	Bottom slide feed screw
36	506-9-186	Top swivel cone	72	608-9M-558	Bottom slide feed screw metric
37	505-9-324	Top slide feed screw nut		505-9-115	Base
38	505-9M-324	Top slide feed screw nut, metric		SHR-1031	Int. gear pin set screw
				506-9-949	Ball handle retaining screw for top

No.	Part No.	Part Name	13 LRQ-20-116	Motor Plate	26 LRQ-20-439	Clutch Shaft
1	506-22-679	Guide Screw	14 1/2-13	(Dual Plate)	27 3/8-16x1/2" Lg.	Set Screw
2	LRQ-20B-447	Brake Rod	15 3/4 N.P.T.	Check Nut (2)	28 1/2-20x3/16" Lg.	Set Screw
3	LRQ-20B-206	Brake Dog	16 #2 P & W	Pipe Plug	29 LRQ-20-110	Clutch Oper.
4	LRQ-201-992	Box Gasket	17 LRQ-20-140	Gear Box	30 LRQ-20-374	Arm
5	1/2-20x5/8" Lg.	Oil Lip Scr. (2)	18 LRQ-20-118	Shaft Collar	31 LRQ-201-993	Clutch Adj.
6	LRQ-201-991	Bench Gasket	19 LRQ-20-427	Roller		Plate
7	1/2-20x1-1/8" Lg.	Yoke Scr. (2)	20 3/8 I.D. x 1/16	Lock Washer		Plate Gasket
8	LRQ-20-503	Plate Swivel	21 3/8-16	Stud Nut		
9	LRQ-20-127	Shaft Binder	22 LRQ-20-498	Roller Stud		
10	1/2-20 x 5/16	Set Screw	23 Timken	Roller Br'gs.		
11	5/16-18x1/2" Lg.	Set Screw	24 LRQ-201-543A	Br'g. Cup		
12	LRQ-20-904	Stud	25 LRQ-20-112	Treadle Arm		
13	LRQ-20-115	Motor Plate				



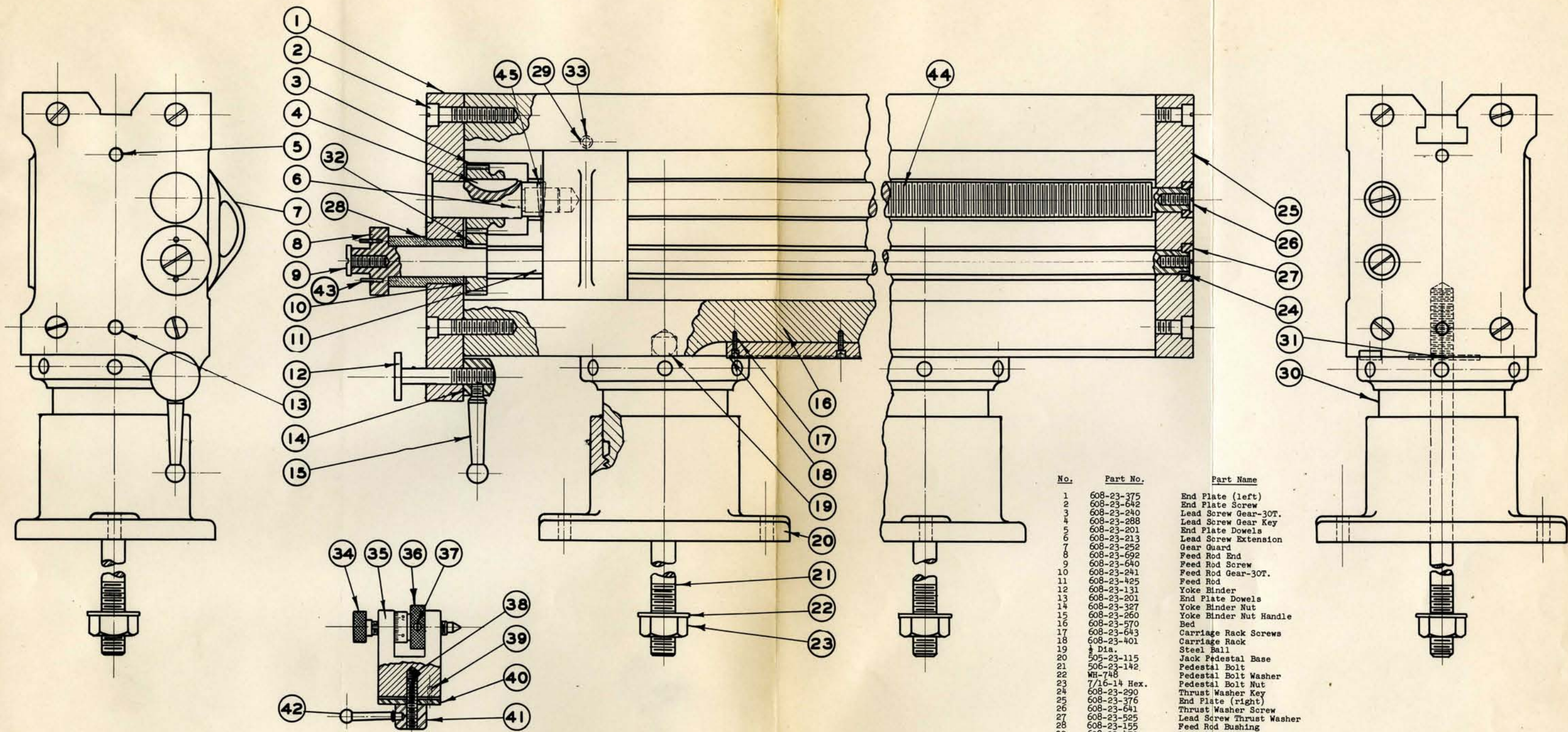
32 10-32x1/2" Lg.	Plate Screws (10)
32 10-32x1" Lg.	Plate Screws (4)
33 LRQ-20-540	Clutch Oper. Yoke (2)
34 LRQ-20-311	Oil Lip
35 LRQ-20B-637	Brake Adj. Screw (2)
36 LRQ-20B-200	Stud
37 LRQ-20B-189	Roller
38 LRQ-20B-480	Brake Spring
39	Shaft
40 Belt	Give Motor Speed & Type of Head
41 LRQ-20B-114	Arm (Hand Oper.)
42 3/8-16x1/2" Lg.	Lock Screw
43 LRQ-20B-186	Collar
44 #10-32x3/4" Lg.	Adj. Screw (10)
45 1/2-20x3/16" Lg.	Set Screw
46 #10-32x1" Lg.	Adj. Screw (4)

47 LRQ-20B-274	Adj. Plate	54 1/2-20x1/2" Lg.	Set Screw	61 1/2-20x1/2" Lg.	Cover Screws	66 Part No. 295
48 LRQ-201-520	Ret. Washer	55 LRQ-20B-274	Socket	62 #9 Hi-Pro	Gear Clutch	Garlock
49 LRQ-20-378	Serial No.	56 3/4 dia. x 1 1/2" Lg.	Cork Cushion	63 LRQ-201-449	Keys	Klozure
	Plate	57 #2 Pullmore	Clutch	64 LRQ-201-817	Ret. Washer	Clutch Shaft
	Cup Bushing	58 LRQ-201-546	Driving Cup	65 LRQ-201-544A	Br'g. Adj.	Cup Screw
	Taper Pin	59 1/4 I.D.	Lock Washer		Shims	(16)
	Driving Cup		Cover Plate		48 T Gear	48 T Gear
					22 T Gear	22 T Gear
					70 LRQ-201-232	Lower Shaft
					71 LRQ-201-447	

72 1/16x3/4" Lg.	Cotter Pin	76 3/8 N.P.T.	Pipe Plug
73 5/16-24	Castellated Nut (2)	77 LRQ-20-655	Plunger
74 1/2-20x3/8" Lg.	Set Screw (2)	78 LRQ-201-221	40 T Gear
	Ret. Washer	79 LRQ-201-220	30 T Gear
	Tip	80 LRQ-20-666	Spring (2)
		81 LRQ-201-529	Ret. Washer
		82 LRQ-20-637	Adj. Screw

SPEED BOX MOTOR DRIVE

RIVETT LATHE & GRINDER INC.
 BOSTON, MASS.
 Drawn by... Date...
 Traced by... Date...
 Checked by... Scale...
LRQ-201



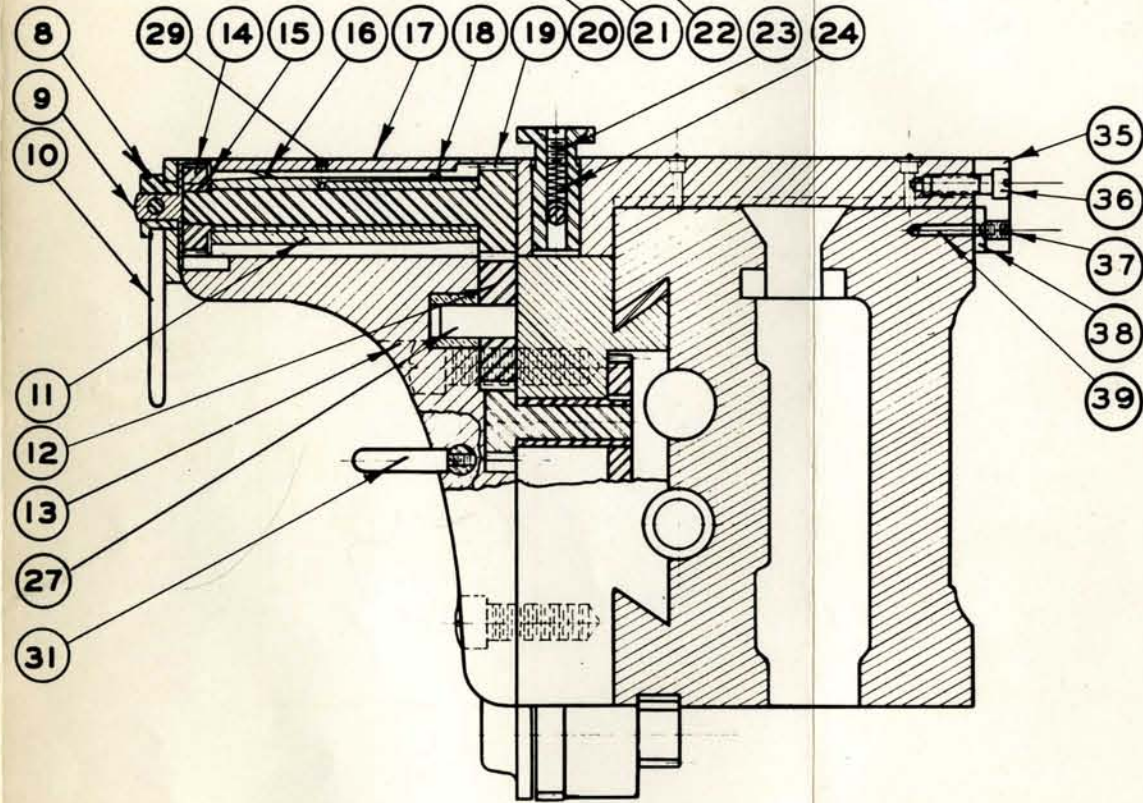
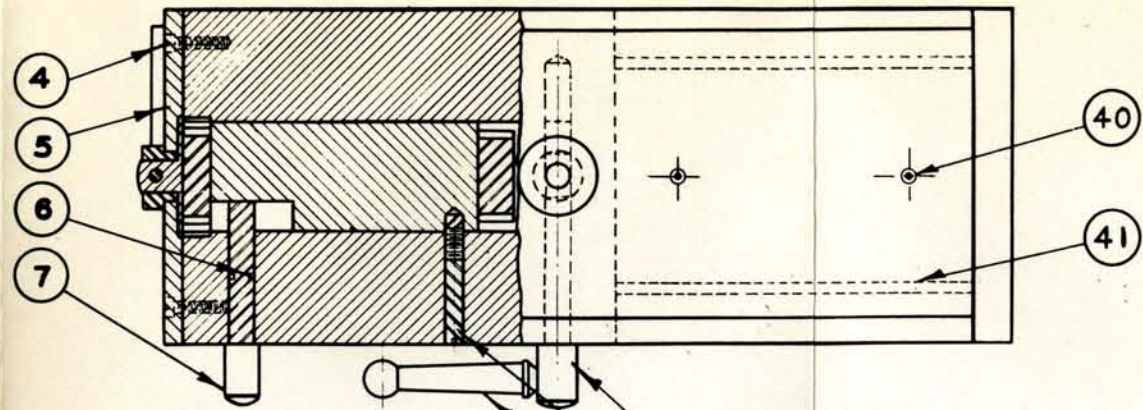
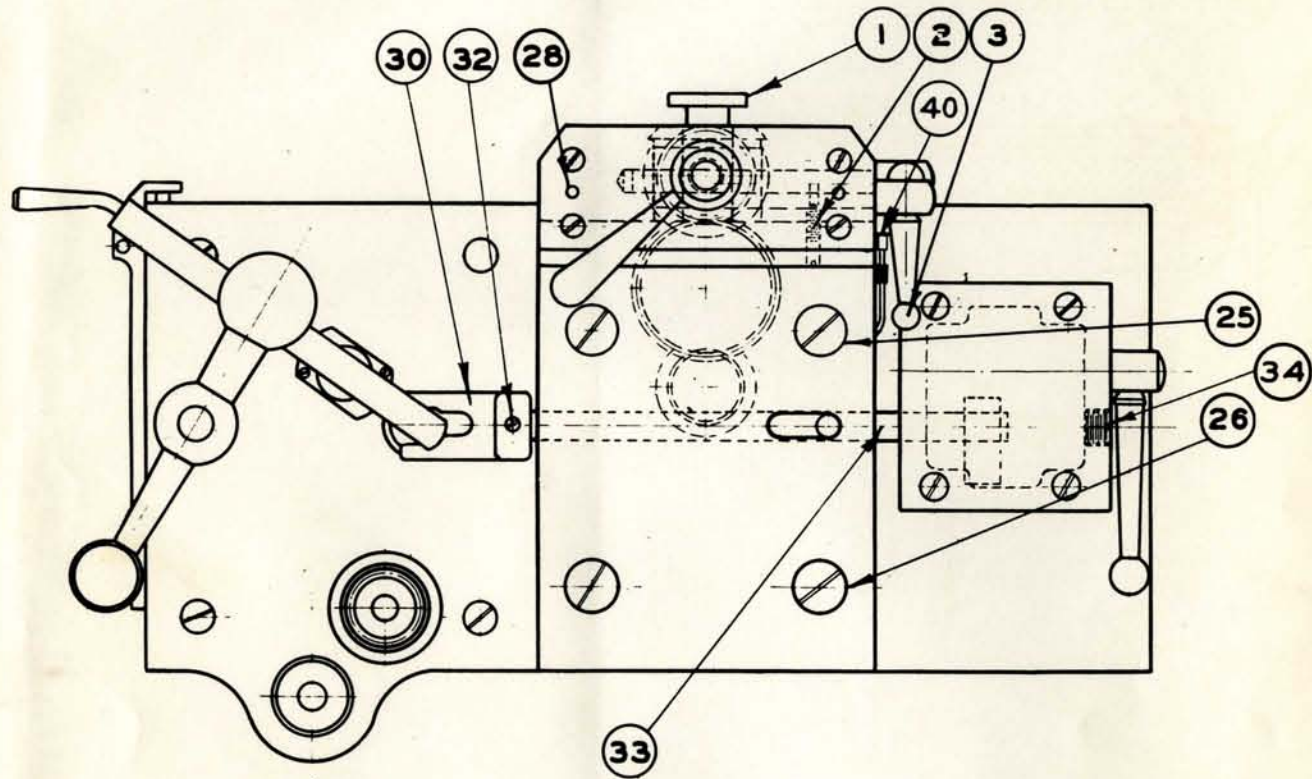
MICROMETER STOP

BED
JACK PEDESTALS
MICRO. STOP

No.	Part No.	Part Name
1	608-23-375	End Plate (left)
2	608-23-642	End Plate Screw
3	608-23-240	Lead Screw Gear-30T.
4	608-23-288	Lead Screw Gear Key
5	608-23-201	End Plate Dowels
6	608-23-213	Lead Screw Extension
7	608-23-252	Gear Guard
8	608-23-692	Feed Rod End
9	608-23-640	Feed Rod Screw
10	608-23-241	Feed Rod Gear-30T.
11	608-23-425	Feed Rod
12	608-23-131	Yoke Blinder
13	608-23-201	End Plate Dowels
14	608-23-327	Yoke Blinder Nut
15	608-23-260	Yoke Blinder Nut Handle
16	608-23-570	Bed
17	608-23-643	Carriage Rack Screws
18	608-23-401	Carriage Rack
19	3/16" Dia.	Steel Ball
20	505-23-115	Jack Pedestal Base
21	506-23-142	Pedestal Bolt
22	WH-748	Pedestal Bolt Washer
23	7/16-14 Hex.	Pedestal Bolt Nut
24	608-23-290	Thrust Washer Key
25	608-23-376	End Plate (right)
26	608-23-641	Thrust Washer Screw
27	608-23-595	Lead Screw Thrust Washer
28	608-23-155	Feed Rod Bushing
29	608-23-479	Gear Guard Spring
30	505-23-270	Jack Pedestal Head
31	608-23-521	Pedestal Washer
32	608-23-291	Feed Rod Gear Key
33	3/16" Dia.	Friction Ball for Guard
34	608-23-650A	Stop Bracket Screw
35	608-23-145A	Stop Bracket
36	608-23-193A	Stop Bracket Dial
37	608-23-651A	Stop Bracket Screw Key
38	608-23-639	Binding Screw
39	608-23-202	Bracket Plate Dowel
40	608-23-377A	Bracket Plate
41	608-23-328	Binding Screw Nut
42	506-9-259	Binding Nut Handle
43	608-23-355	Dowel Pin for Gears
44	608-23-637	Lead Screw
45	#1, x 3/4 lg.	Taper Pin

WHEAT LANE & GUNDRY WORKS
BOSTON, MASS.
Drawn by G. D. H. M. Date 7/9/43
Checked by _____
608-23

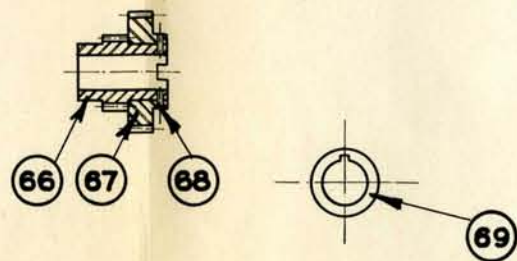
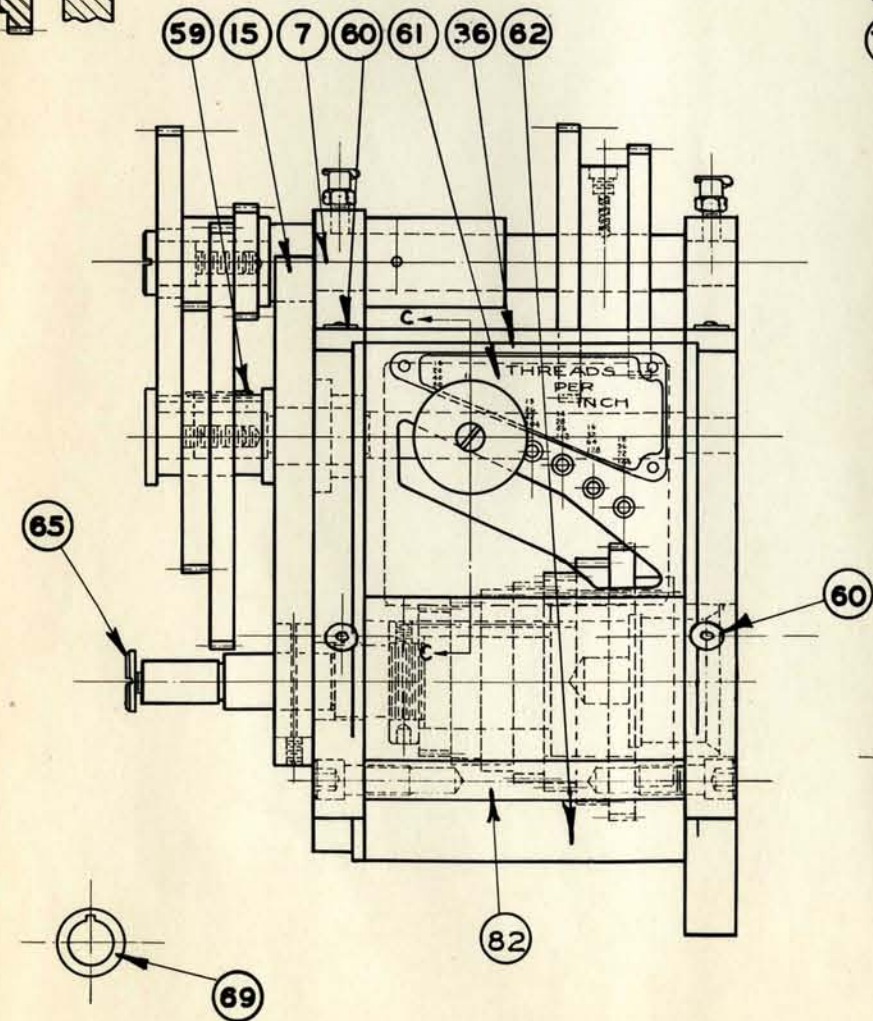
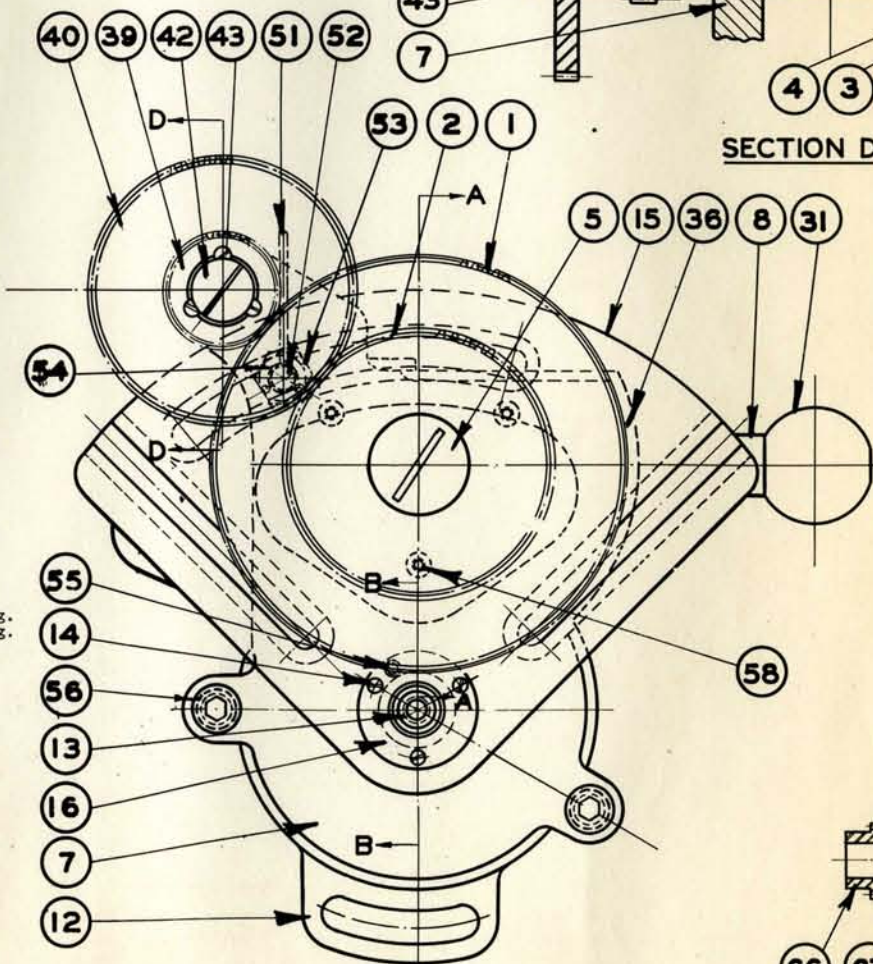
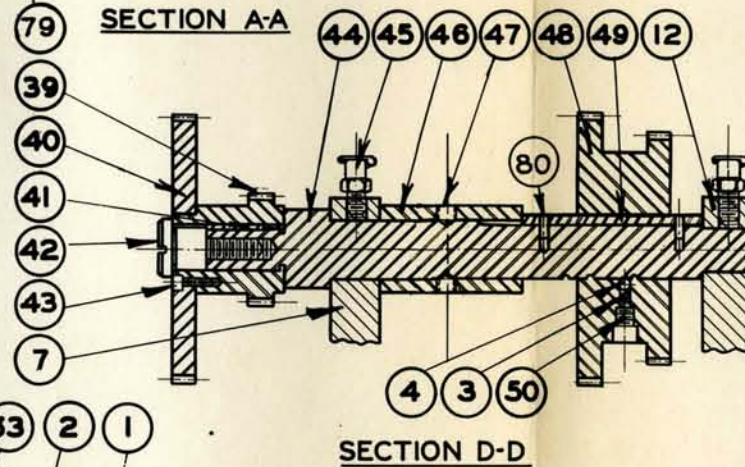
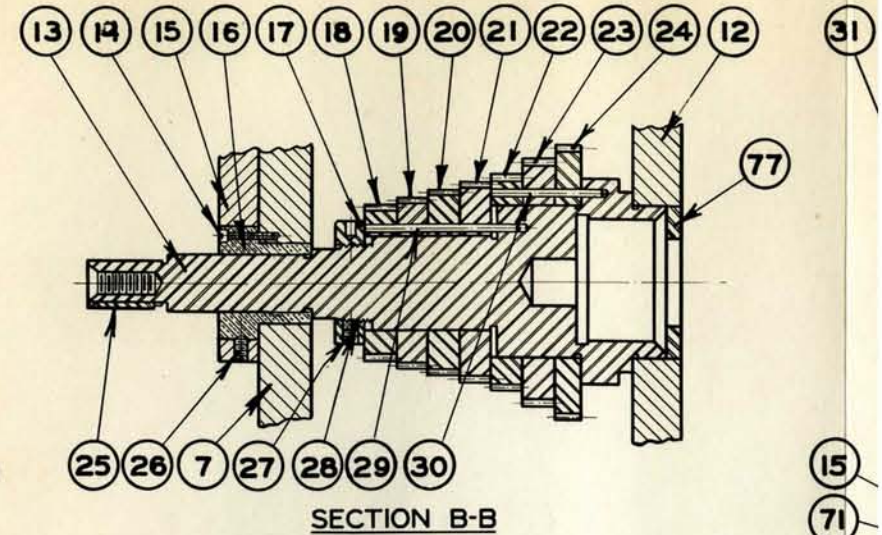
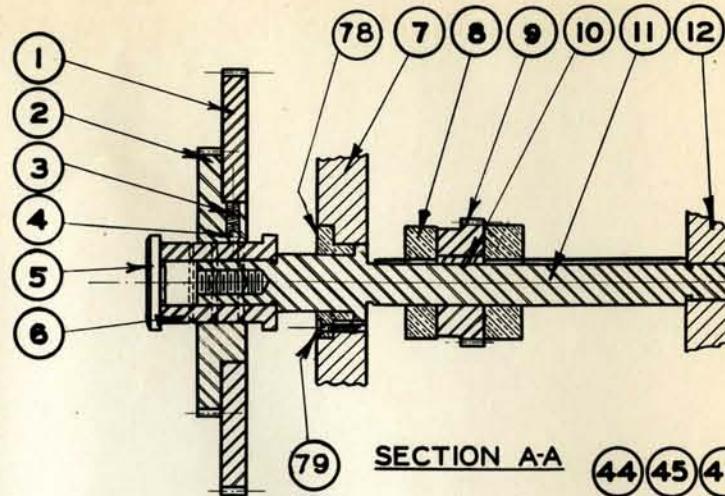
No.	Part No.	Part Name	No.	Part No.	Part Name
1	608-26-673	Binder Stud	21	608-26-642	Pivot Screw
2	608-26-641	Lever Stop Screw	22	608-26-127	Binder
3	608-26-261	Lever Handle	23	608-26-637	Binder Stud Spring Screw
4	8-32x3/8 Flt.	End Plate Screw	24	608-26-667	Binder Stud Spring
5	608-26-375	Lever Stop Pin	25	3/8-16x1-1/2	Angle Screw
6	608-26-363	Bearing Block Ecc. Lever	26	7/8-16 x 1	Angle Screw
7	608-26-304	Guard Bushing	27	608-26-437	Cross Inter Gear Stud
8	608-26-155	Cross Feed Gear Guard	28	LJ31-254	End Plate Dowel
9	608-26-251	Guard Handle	29	8-26 x 1/8"	Bearing Block Cover Oil Scr.
10	608-26-262	Bearing Block	30	608-26-220	Locking Fork
11	608-26-133	Cross Inter Gear 33 T	31	608-26-261A	Interlocking Handle
12	608-26-242	Carriage Angle	32	#10-32	Set Screw
13	608-26-677	Cross Feed Gear 22 T	33	608-26-438	Interlocking Shaft
14	608-26-243	Gear Key	34	608-26-379	Lead Screw Nut Cover Plug
15	103-17-287	Block Spring	35	608-26-376	Carriage Angle End Plate Rear
16	608-26-482	Bearing Block Cover	36	#10-32 x 5/8	Flt. Head Screw
17	608-26-181	Bearing Block Spring Screw	37	#10-32 x 5/16	Headless Slotted Cup Pointed Scr.
18	1/8-40 x 1/4	Bearing Block Spring Screw	38	608-26-246	Rear End Plate G1b
19	608-26-244	Cross Feed Gear	39	506-9-354	G1b Dowel Pin
20	608-26-260	Binder Handle	40	#56-00	Bowen Oil Cup (3)
			41	608-26-334	Carriage Angle Wiper

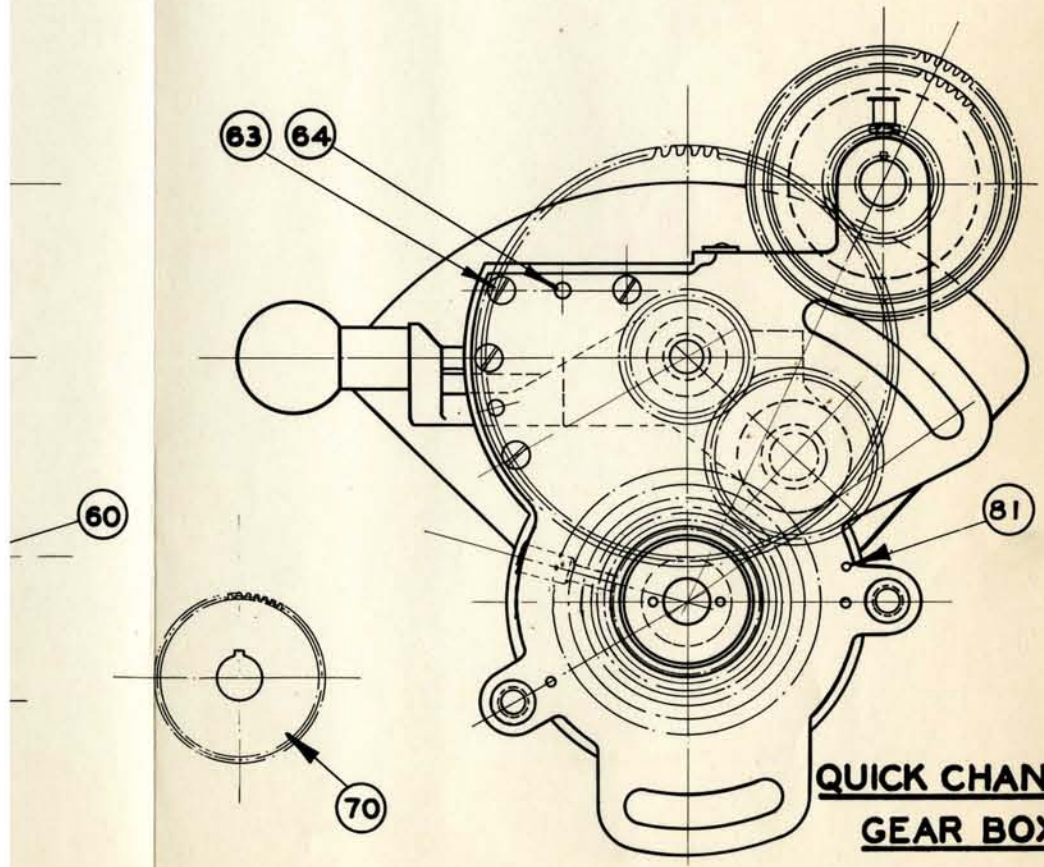
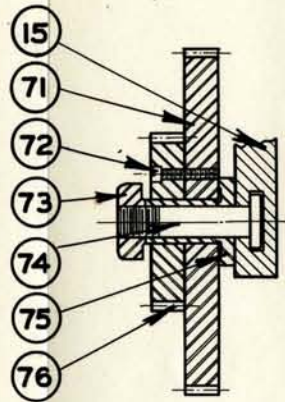
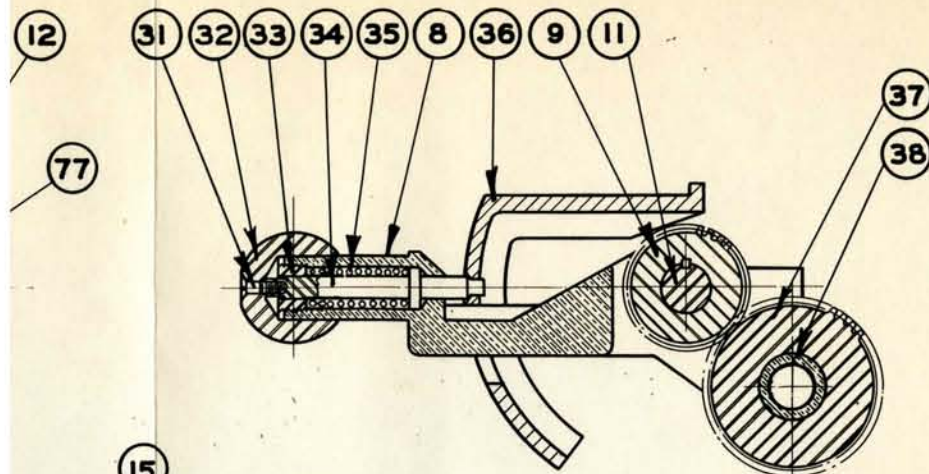


CARRIAGE ANGLE

WAVETT LATHE & GRINDER INC.
 BOSTON, MASS.
 Drawn by: W.C.C. Date: 5.1.54
 Traced by: Date:
 Checked by: Date:
608-26A

No.	Part No.	Part Name
1	608-20-241	Compound Gear 112T.
2	240	Compound Gear 70T.
3	666	Lock Ball Spring
4	5/32 dia.	Lock Ball
5	608-20-639	Thimble Retaining Screw
6	717	Compound Gear Thimble
7	379	Gear Case - front plate
8	258	Tumbler Handle
9	816	Tumbler Driving Gear
10	672	Tumbler Driving Gear Key
11	440	Tumbler Shaft
12	380	Gear Case - rear plate
13	442	Change Gear Shaft
14	#4-40 x 5/8 lg.	Fill. Head Screw
15	608-20-540	Yoke
16	118	Change Gear Shaft Bearing
17	324	Change Gear Shaft Nut
18	818	Change Gear 40T.
19	819	Change Gear 44T.
20	820	Change Gear 48T.
21	821	Change Gear 52T.
22	822	Change Gear 56T.
23	823	Change Gear 64T.
24	824	Change Gear 72T.
25	290	Shaft End Key
26	1/2-20 x 3/8 lg.	Allen Headless Set Screw
27	#10-32 x 3/16lg.	Allen Headless Set Screw
28	103-4B-511	Nut Binding Screw/Tip
29	608-20-205	Change Gear Dowel
30	103-17-199	Change Gear Dowel
31	#8-32 x 3/8 lg.	Flat Head Screw
32	608-20-259	Ball Handle
33	153	Plunger Bushing
34	369	Index Pin
35	668	Plunger Spring
36	382	Index Plate
37	817	Tumbler Idler Gear
38	156	Idler Gear Bushing
39	239	Fixed Compound Small Gear
40	238	Fixed Compound Large Gear
41	291	Compound Shaft Key
42	638	Gear Retaining Screw
43	#4-40 x 3/8 lg.	Fill. Head Screw
44	608-20-441	Compound Shaft
45	#101 Style "B"	Gits Oil Cup
46	608-20-193	Compound Shaft Collar
47	#10-32x3/16 lg.	Allen Headless Set Screw
48	608-20-235	1st. Compound Gear
49	670	Compound Shaft Key
50	#10-32x3/16 lg.	Fillister Head Screw
51	608-20-262	Nut Tightening Pin
52	129	Yoke Binder
53	325	Yoke Binder Nut
54	522	Yoke Binder Washer
55	#OC-1/4	Bowen Oil Cup
56	5/16-18x3/4 lg.	Allen Cap Screw (4 req.)
58	#8-32 x 3/8 lg.	Fillister Head Screw
59	608-20-671	Compound Gear Thimble Key
60	#OC-1/4	Bowen Oil Cup
61	608-20-677	Gear Box Thread Table - English
61	608-20M-677	" " - Metric
62	608-20-172	Gear Case
63	#10-32 x 5/8 lg.	Fillister HeadScrew
64	506-9-356	Dowel Pin
65	608-20-637	Change Gear Shaft End Screw
66	236	Small Stud Gear - 4 N.S. collet
66	236A	" " - 5C collet
67	237	Large Stud Gear
68	361	Dowel Pin
69	188	Change Gear Shaft Collar 1/4" lg.
69	190	" " " 3/8" lg.
69	191	" " " 1/8" lg.
70	811	Change Gear 69T.
70	812	" " 48T.
70	243	" " 90T.
70	244	" " 81T.
71	242	Idler Gear 90T.
72	#6-32 x 5/8 lg.	Fill. Head Screw
73	608-23-329	Change Gear Sleeve Binder Nut
74	608-20-128	Change Gear Sleeve Binder
75	456	Change Gear Sleeve
76	815	Compound Gear 45T.
77	192	Centering Collar
78	122	Tumbler Shaft Bearing
79	#4-40 x 3/8 lg.	Fill. Head Screw
80	608-20-199	Compound Shaft Key Pin (2 req.)
81	LY4-354	Gear Case Pin
82	608-20-826	Spacing Rod (2 req.)





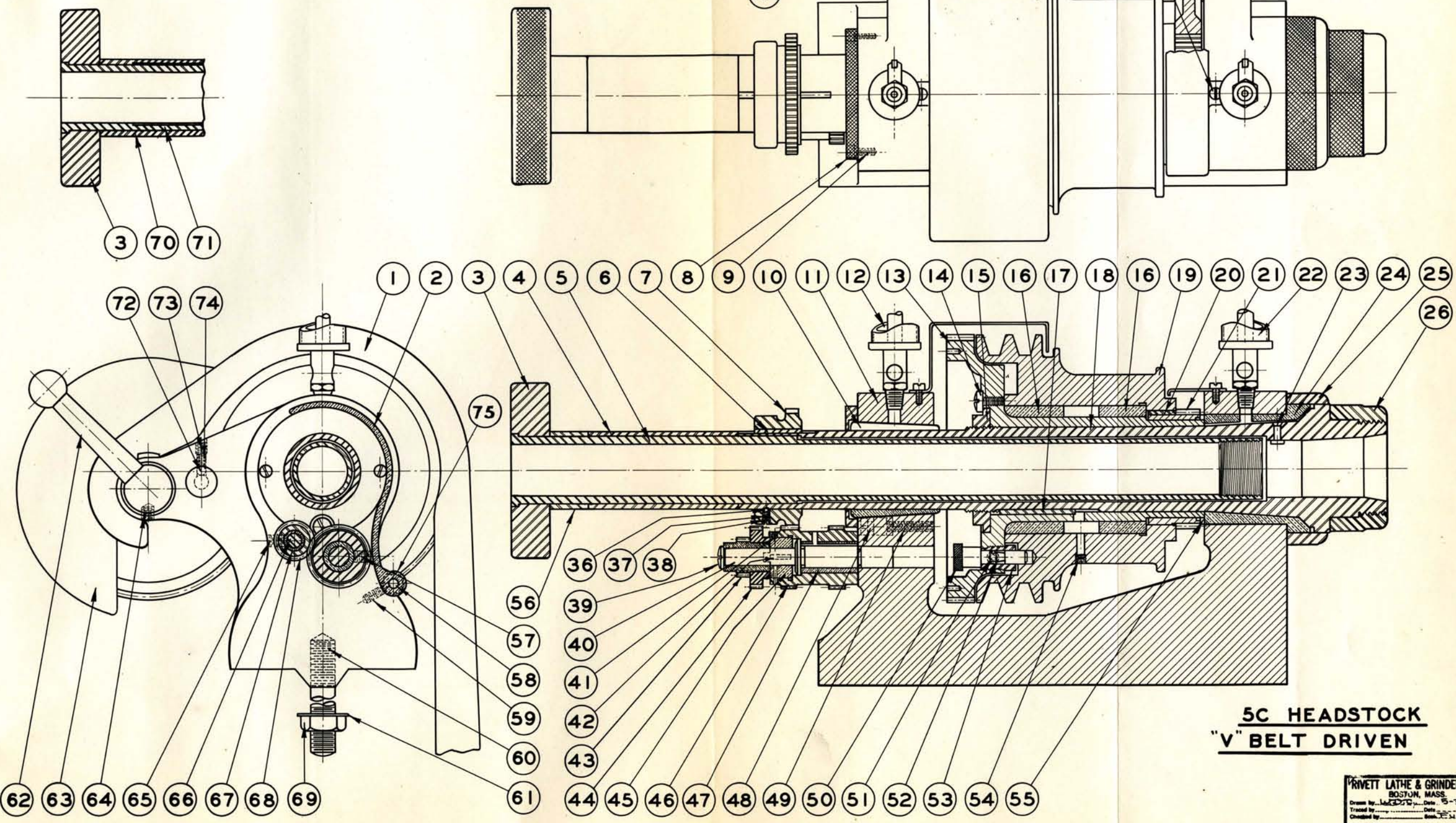
**QUICK CHANGE
 GEAR BOX**

RIVETT LATHE & GRINDER INC.
 BOSTON, MASS.
 Drawn by N.P.B. 3-19-43
 Traced by N.P.B. 3-11-43
 Checked by E.T.B. 3-11-43
608-20

No.	Part No.	Part Name
1	608-5C-12-252A	Gear & Belt Guard
2	608-5C-12-293	Spindle Gear Guard
3	608-5C-12-292	Draw-in Spindle Knob
4	608-5C-12-191	Spacing Collar
5	608-5C-12-469	Draw-in Spindle
6	608-12-233	Spindle Gear Key
7	608-5C-12-164	Spindle Gear (60 T)
8	608-12-233	Rear Dust Ring
9	#8-32 x 3/8	Fill. Head Screw
10	608-5C-12-152	Rear Bushing
11	608-5C-12-271A	Headstock
12	#000	Lunkenheimer Oil Cup
13	608-5C-12-232	Driving Gear
14	608-12-642	Stop Screw
15	608-5C-12-324	Check Nut
16	608-5C-12-155	Pulley Bushing
17	608-12-287	Driving Gear Key
18	608-5C-12-468	Headstock Spindle
19	608-5C-12-392	Headstock Sheave
20	103-17-287	Pulley Gear
21	608-5C-12-231	Pulley Gear
22	#000	Lunkenheimer Oil Cup
23	608-5C-12-287	Spindle Key
24	608-5C-12-151	Front Bushing

25	608-5C-12-163	Front Dust Ring
26	505-5C-12-251	Spindle Nose Guard
27	608-12-640	Lever Screw
28	608-12-194	Rear Bushing
29	504-12-287	Index Pin Knob
30	608-5C-12-354	Index Pin
31	#8-32 x 3/8	Fill. Head Screw
32	608-5C-12-235	Back Gear
33	608-12-440	Back Gear Shaft
34	#8-32 x 3/8	Fill. Head Screw
35	608-12-153	Front Bushing
36	5/32"	Ball
37	608-5C-12-667	Spring
38	#10-32 x 1/8	Set Screw
39	608-12-641	Stud Gear Screw
40	608-12-500	Switch Gear Stud
41	#10-32 x 1/8	Set Screw
42	608-12-290	Collar Key
43	608-5C-12-236	Stud Gear (24 T)
44	608-5C-12-237	Stud Gear (15 T)
45	608-12-190	Drive Collar
46	608-12-234	Switch Gear-30T
47	608-12-158	Gear Bushing
48	103-12-287	Rear Bushing Key
49	103-12-638	Bushing Key Screw
50	608-5C-12-355	Drive Pin

51	608-5C-12-356	Detent Pin
52	608-5C-666	Drive Pin Spring
53	608-5C-12-156	Drive Pin Bushing
54	103-17-439	Oil Screw
55	608-5C-12-473	Pulley Spacer
56	608-5C-12-188	Collar
57	1-20 x 1/8	Allen Set Screw
58	608-5C-12-705	Gear Guard Hinge
59	#10-32 x 1/4	Fill. Head Screw
60	608-12-498	Binder Stud
61	WH-748	Binder Stud Washer
62	608-12-302	Gear Shaft Lever
63	608-5C-12-253A	Back Gear Guard
64	1-28 x 1/8	Allen Set Screw
65	608-12-399	Int. Gear Stud
66	608-12-157	Int. Gear Bushing
67	608-12-232	Int. Gear (18 T)
68	7/16-14	Hex. Nut
69	608-5C-12-192	*Collar
70	608-5C-470	*Draw-in Spindle
71	608-5C-12-357	Detent Pin
72	1-20 x 1/8	Set Screw
73	608-5C-12-666	Spring
74	608-5C-12-521	Hinge Washer
75		*With Gear Box or Lever Chuck Closer



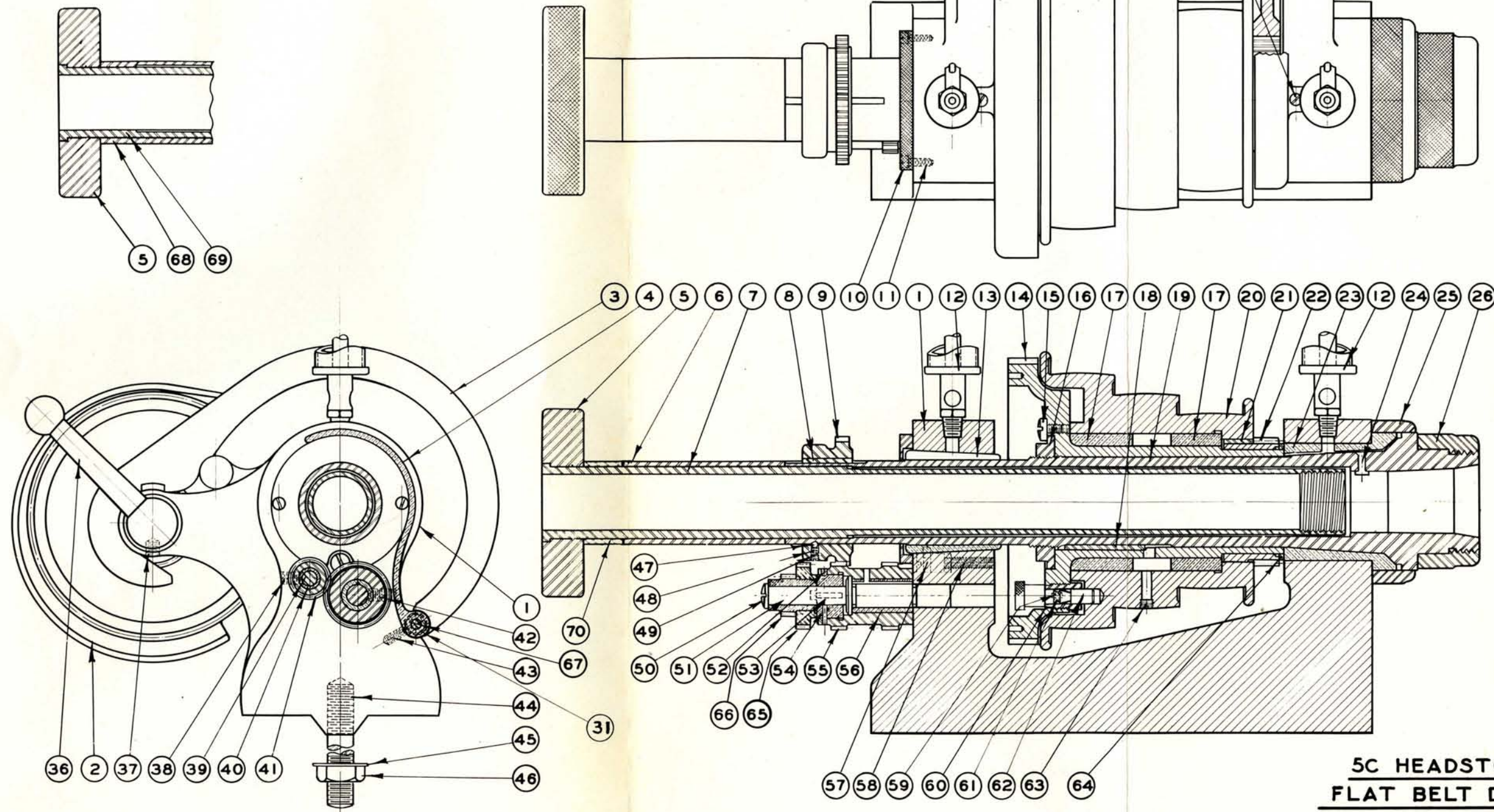
5C HEADSTOCK
"V" BELT DRIVEN

RIVETT LATHE & GRINDER INC.
 BOSTON, MASS.
 Drawn by: L.C.S. Date: 5-3-43
 Traced by: _____
 Checked by: _____
 608-5C-12A

No.	Part No.	Part Name
1	608-5C-12-271	Headstock
2	608-5C-12-253	Gear Guard (R.H.)
3	608-5C-12-252	Gear Guard (L.H.)
4	608-5C-12-993	Spindle Gear Guard
5	505-5C-12-292	Draw-in Spindle Knob
6	608-5C-12-191	Spacing Collar
7	608-5C-12-469	Draw-in Spindle
8	GK21-288	Spindle Gear Key
9	608-12-233	Spindle Gear (60-T)
10	608-5C-12-164	Rear Dust Ring
11	#8-32 x 3/8	Fill. Head Screw
12	#000	Lunkenheimer Oil Cup
13	608-5C-12-152	Rear Bushing
14	608-5C-12-232	Driving Gear
15	608-12-642	Check Nut Set Screw
16	608-5C-12-324	Gear Check Nut
17	608-5C-12-155	Pulley Bushing
18	608-12-287	Driving Gear Key
19	608-5C-12-468	Headstock Spindle
20	608-5C-12-391	Pulley
21	103-17-287	Pulley Gear Key
22	608-5C-12-231	Pulley Gear
23	608-5C-12-151	Front Bushing
24	608-5C-12-287	Spindle Key
25	608-5C-12-163	Front Dust Cap
26	505-5C-12-251	Spindle Nose Guard
27	608-12-640	Gear Shaft Lever Scr.
28	608-12-154	Gear Shaft Bushing
29	504-12-267	Index Pin Knob
30	608-5C-12-372	Index Pin
31	608-5C-12-521	Hinge Washer
32	608-5C-12-235	Back Gear
33	608-12-440	Back Gear Shaft
34	#8-32x3/8	Fill. Head Screw
35	608-12-153	Gear Shaft Bushing
36	608-12-302	Gear Shaft Lever
37	608-12-640	Bushing Screw
38	1/2" - 20 x 3/8"	Allen Set Screw
39	608-12-499	Int. Gear Stud
40	608-12-157	Int. Gear Bushing
41	608-12-232	Int. Gear (18-T)
42	1/2" - 20 x 3/8"	Allen Set Screw
43	#10-32 x 1/2"	Fill. Head Screw
44	608-12-498	Binder Stud
45	WH-748	Binder Stud Washer
46	7/16-14	Hex. Nut
47	5/32"	Ball
48	608-20-666	Spring

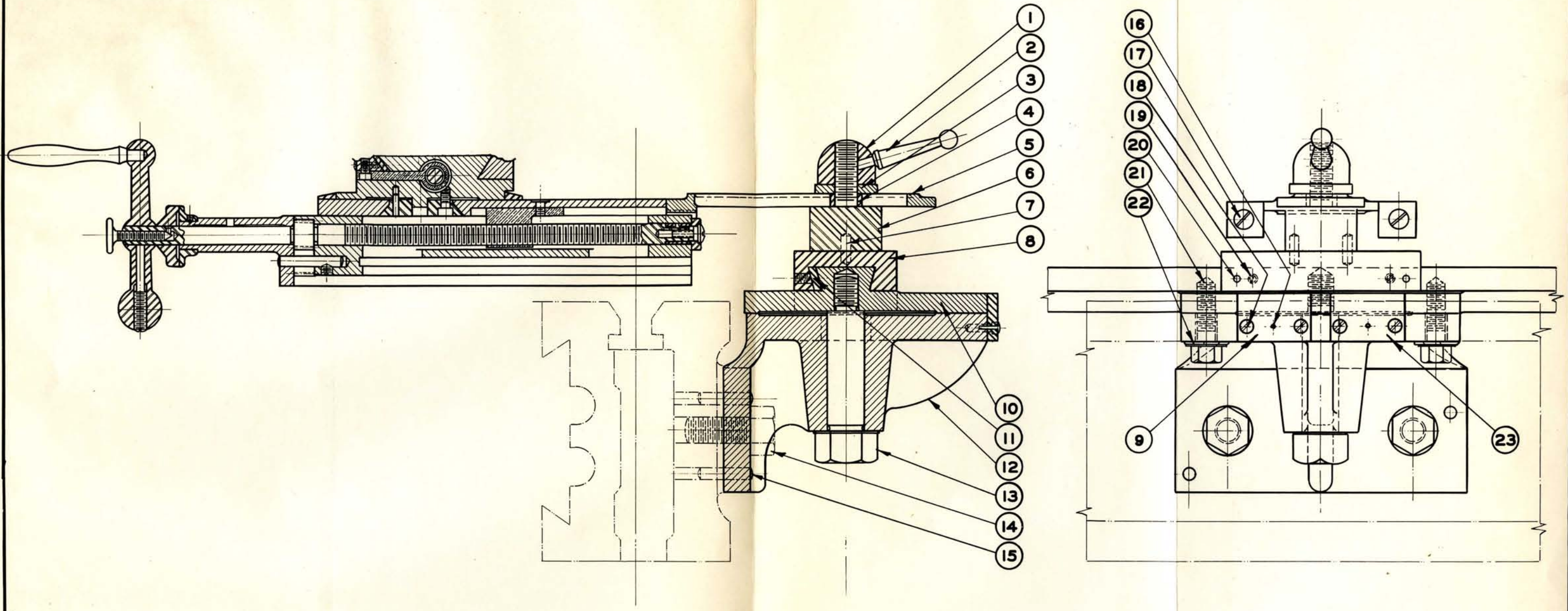
49	#10-32 x 1/8	Set Screw
50	608-12-641	Stud Gear Ret. Scr.
51	608-12-500	Switch gear Stud
52	#10-32 x 1/8	Set Screw
53	608-12-290	Collar Key
54	608-12-190	Stud Gear Drive Collar
55	608-12-234	Switch Gear
56	608-12-158	Gear Bushing
57	103-12-287	Rear Bushing Key
58	103-12-638	Rear Bushing Key Scr.
59	608-5C-12-356	Detent Pin
60	608-5C-12-156	Drive Pin Bushing
61	608-20-666	Drive Pin Spring
62	608-5C-12-355	Drive Pin
63	103-17-639	Oil Screw
64	608-5C-12-473	Pulley Spacer
65	608-5C-12-236	Stud Gear (24-T)
66	608-5C-12-237	Stud Gear (15-T)
67	608-5C-12-705	Gear Guard Hinge
68	608-5C-12-192	*Collar
69	L08-5C-470	*Draw-In Spindle
70	608-5C-12-188	Collar

*With Gear Box or Lever Chuck Closer



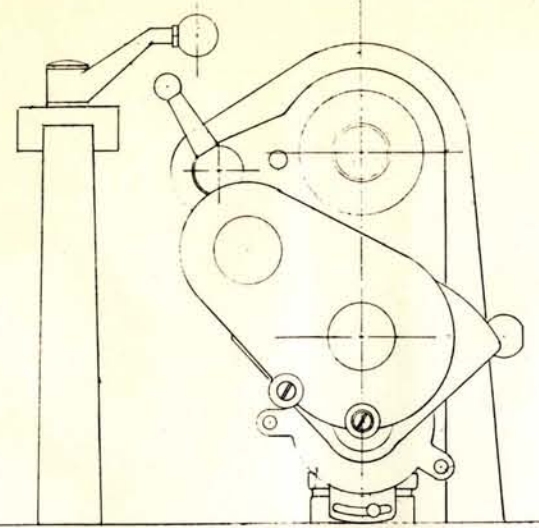
**5C HEADSTOCK
FLAT BELT DRIVEN**

RWETT LATHE & MACHINE CO.
 BOSTON, MASS.
 Drawn by G. DER... 3/2/13
 Traced by...
 Checked by...
608-5C-12



TAPER ATTACHMENT

WANNETT LATHE & GRINDER INC.
BOSTON, MASS.
Drawn by *WAS* Date *5-1-43*
Traced by _____ Date _____
Checked by _____ Date *E.V.L.*
608-11



16" REQUIRED TO WITHDRAW
DRAW-IN SPINDLE

59 ¹/₈

608-5C-12-393

505-23-118

DAYTON 1M072

DRIVING SHEAVE
DAYTON BK 30
(P.D. = 2.4)

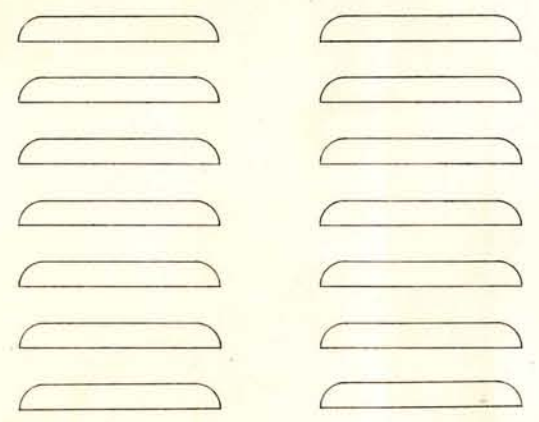
44 ¹/₂

C' SHAFT SHEAVE
608-16W-385

DAYTON 2M039

MOTOR SHEAVE
608-16W-385 (60 CYCLE)

33



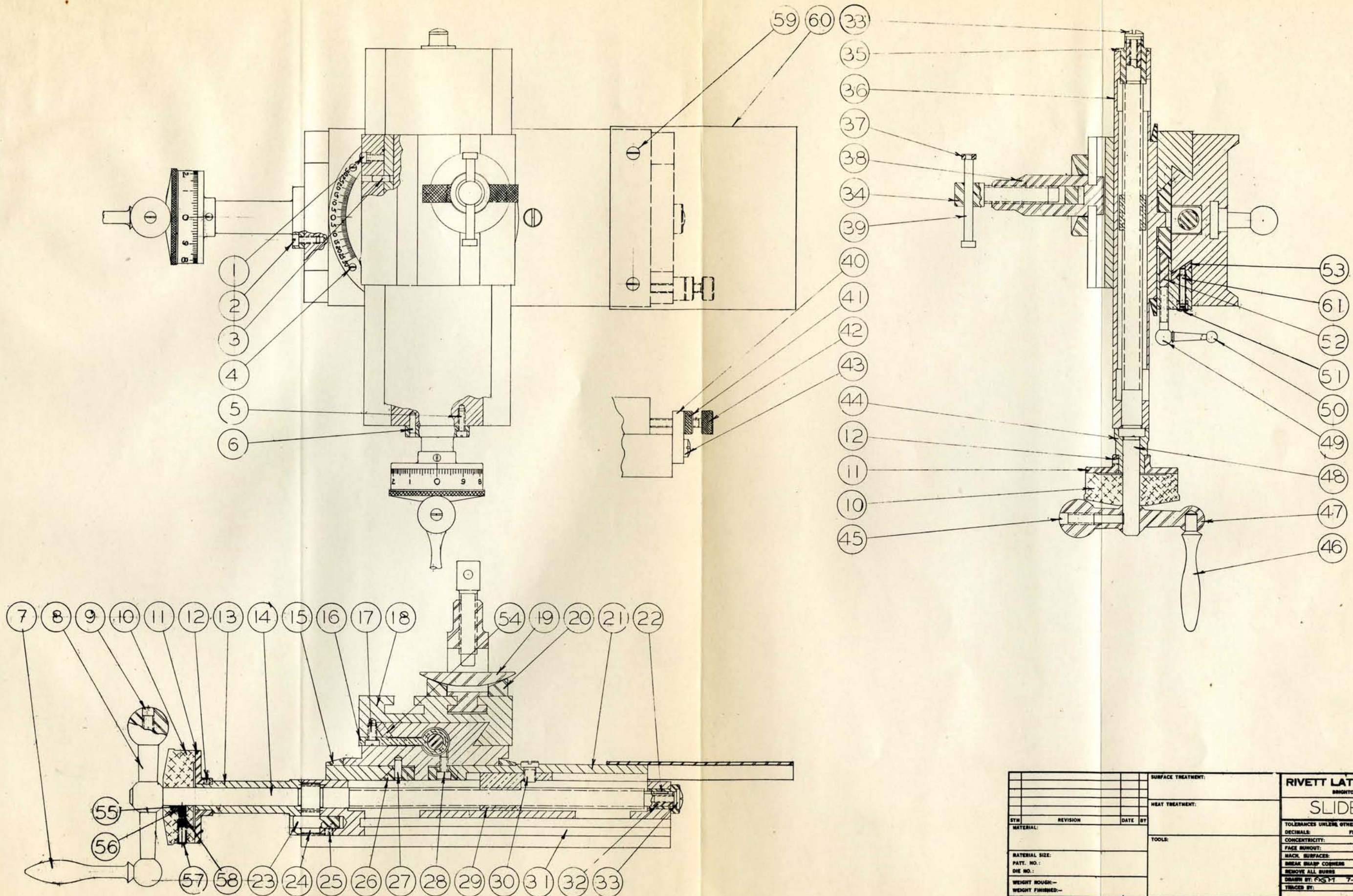
20 ¹/₄ 2 5 ¹/₄ 1 ³/₈
23 26

52 ³/₄

⁹/₁₆ DIA. HOLES - ¹/₂ DIA. LAG
SCREWS RECOMMENDED

608-PV5C LATHE
WORTHINGTON DRIVE
KNEE HOLE CABINET

SURFACE TREATMENT:			RIVETT LATHE & GRINDER, INC. BRIGHTON, BOSTON, MASS., U.S.A.		
HEAT TREATMENT:			FLOOR PLAN		
TOLERANCES UNLESS OTHERWISE SPECIFIED—			DECIMALS FRACTIONS ANGLES		
CONCENTRICITY:			FACE SURFACES		
RACK SURFACES			BEAR SHARP CORNERS		
MATERIAL:			MATERIAL SIZE		
REVISION:			PART NO.		
DATE:			DIE NO.		
WEIGHT:			WEIGHT FINISHED—		
FINISH:			FINISH BY CYCLE 1-22-48		
CHECKED BY:			TRACED BY:		
NO. REQ. PER ASSEMBLY:			NO. REQ. PER ASSEMBLY:		
			608-10W		



SYN		REVISION		DATE BY		SURFACE TREATMENT:		RIVETT LATHE & GRINDER, INC.	
MATERIAL:						HEAT TREATMENT:		BRIGHTON, MASS., U.S.A.	
MATERIAL SIZE:						TOOLS:		SLIDE REST	
PATT. NO.:								TOLERANCES UNLESS OTHERWISE SPECIFIED:	
DIE NO.:								DECIMALS: FRACTIONS: ANGLES:	
WEIGHT ROUGH:								CONCENTRICITY:	
WEIGHT FINISHED:								FACE SURFOUT:	
ASSEMBLY NO.:								BACK SURFACES:	
NO. PER ASSEMBLY:								BREAK SHARP CORNERS	
								REMOVE ALL BURRS	
								DRAWN BY: P.G. 17	
								7-14-47	
								CHECKED BY:	
								SCALE: 1" = 1"	
								FIG. NO.	
								608-9A	