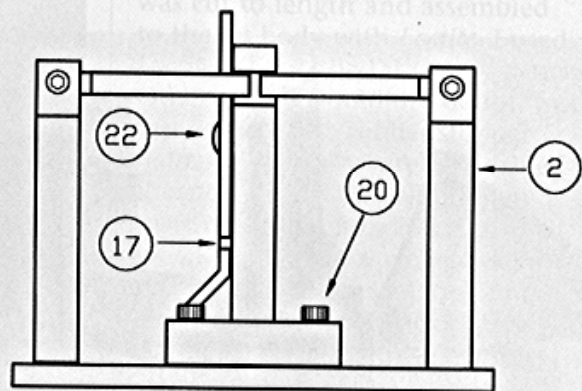
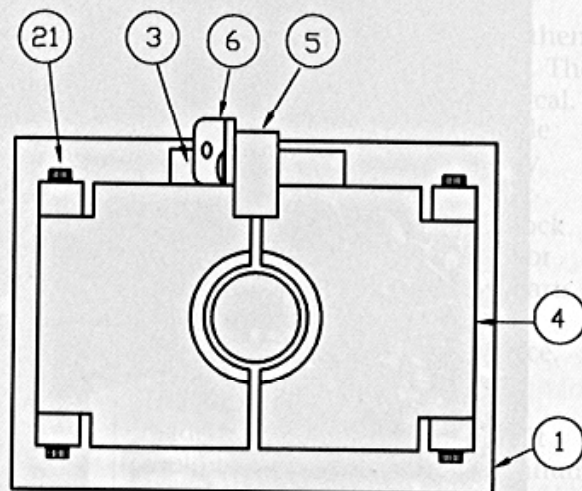
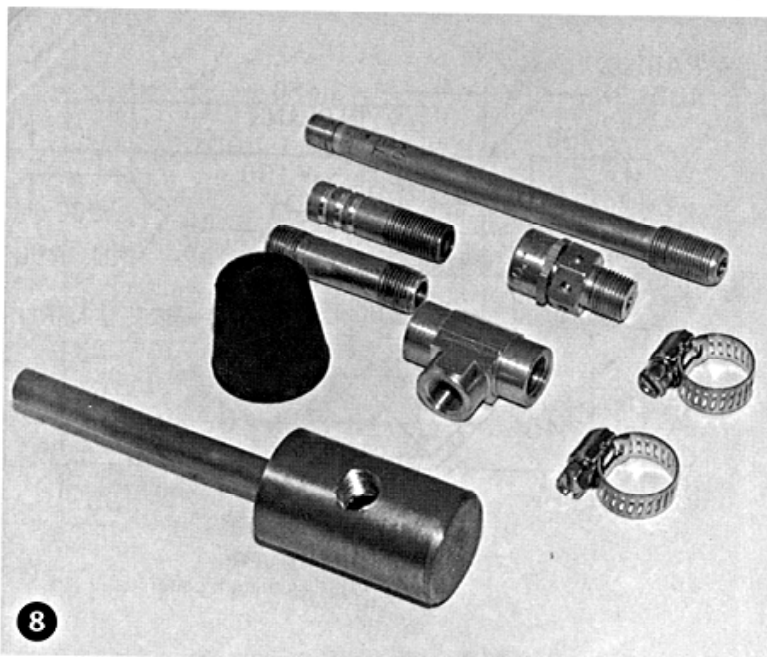


BILL OF MATERIALS

NO.	QTY.	NAME	MATERIAL
1	1	Bottom Plate	6061 aluminum plate 4.00" × 5.50" × .25"
2	2	Side Plate	6061 aluminum plate 3.00" × .437" × .50"
3	1	Receiver	6061 aluminum plate 2.00" × 2.625" × .50"
4	1	Clamp Plate	6061 aluminum plate 3.00" × 5.00" × .25"
5	1	Latch	6061 aluminum bar 1.00" × 3.50" × .50"
6	1	Trip Lever	6061 aluminum plate 3/4" × 3.450" × .125"
7	1	Spring	Compression spring .187" od × .750" × .025 wire
8	1	Jet Body	1" dia × 1.650" 416ss
9	1	Nozzle Tube	5/16" o.d. copper tube 3.200" long
10	1	Rubber Stopper #4 similar to	McMaster-Carr 9545k16
11	2	Nipple	1/8" brass pipe 1.50" long
12	1	Tee	1/8" brass tee
13	1	Safety Valve	F.C. Kingston Co. No.128A1 100 psi 1/8" pipe
14	1	Air Hose	3/8" id × 300 psi × 10' long
15	2	Hose Clamps	3/8" stainless steel
16	1	Valve Stem	Truck valve stem with core, approx 4" long
17	1	Roll Pin	1/8" × 3/4" (latch trip stop)
18	1	Roll Pin	1/8" × 1" (latch pivot)
19	4	Soc. Cap Scr	10-32 × 1/2" flat head (base plate-side plate)
20	2	Soc. Cap Scr	10-32 × 3/4" (receiver- base plate)
21	4	Soc. Cap Scr	8-32 × 3/4" (side plate - clamp)
22	1	Soc. Cap Scr	8-32 × 1/2" button head (trip lever-latch)
23	1	Release Cord	10' nylon braided line No.18 or similar



ASSEMBLY DRAWING