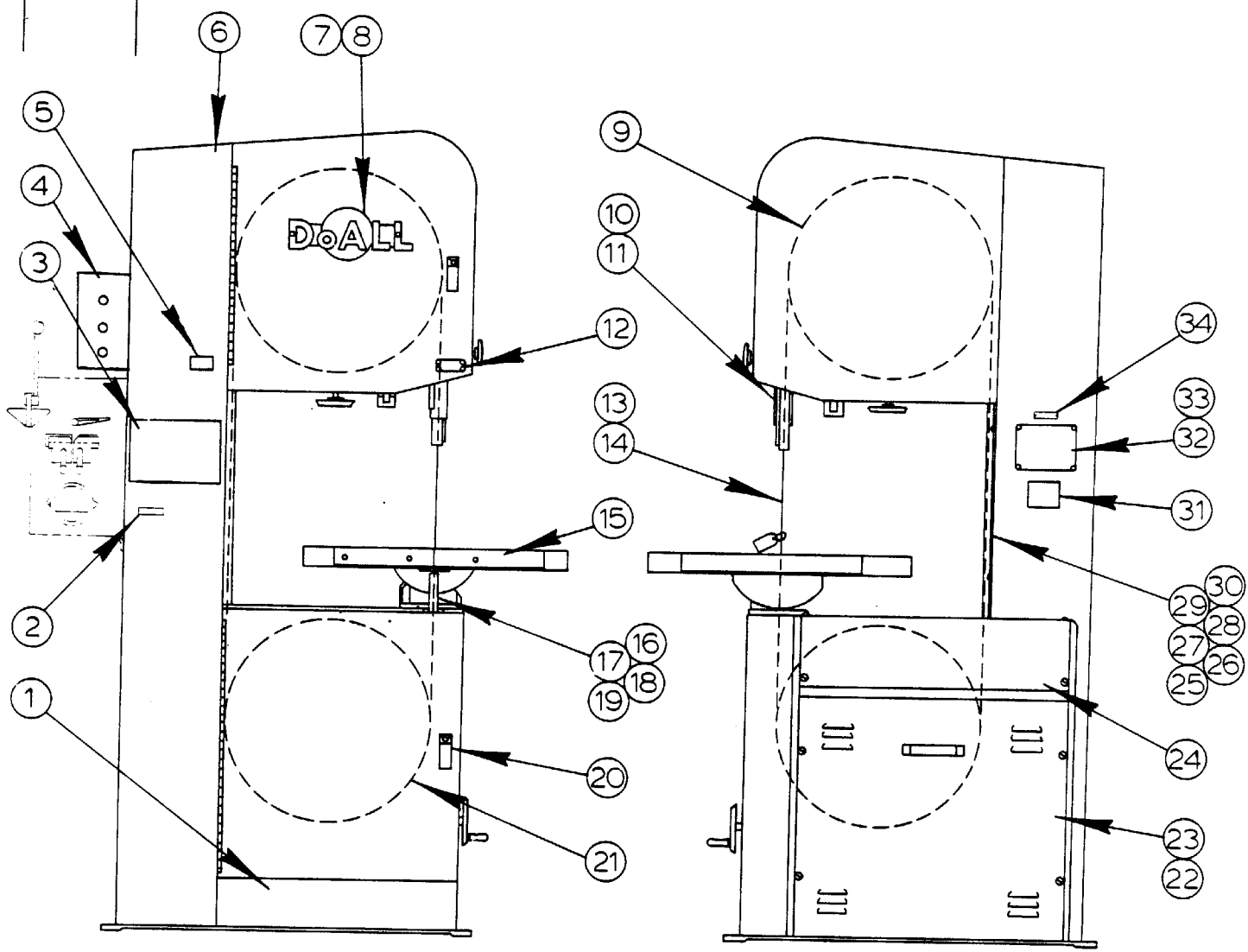


INDEX A-2

FICHE NO. C-13 CLASS Utility MODEL 2013-V SERIAL NO. 457-86101 TO _____

PAGE NO.	DESCRIPTION	FIRST SERIAL	LAST SERIAL	FRAME NO.		FICHE NO.
				DWG.	P. LIST	
C-1-64	Final Assembly	A11		A-3	A-4	
C-5-107	*Air Compressor (Mist Coolant, Air Table)	A11		D-11	D-12	
C-9-22	*Air Feed Assembly	A11		A-5	A-6	
C-8-10	*Air Pump Assembly	A11		A-7	A-8	
C-7-26	*Band Filing and Polishing Assemblies	A11		A-9	A-10	
C-5-108	Bandwheel Assembly (Lower)	457-86101 to 457-87612		B-13	B-14	
C-5-111	Bandwheel Assembly (Lower)	457-87613 to		C-1	C-2	
C-2-79	Bandwheel Assembly (Upper)	A11		C-11	C-12	
H1-19.0	*Blade Shear Assembly	See Buttweider		D-9	D-10	H-3
C-9-23	*Carrier and Cable Assembly (Air Feed)	A11		A-11	A-12	
C-9-21	*Chip Blower Assembly	A11		B-1	B-2	
C-3-75	*Contour Assembly (Air Table)	A11		B-3	B-4	
C-3-76	*Contour Attachment Sub-Assembly (Air Table)	A11		B-5	B-6	
C-3-77	*Contour Clamp Ring Assembly (Air Table)	A11		B-7	B-8	
C-10-2	*Disc Cutter Assembly	A11		B-11	B-12	
C-1-64	Door Latches	A11		A-3	A-4	
C-5-108	Drive Assembly	457-86101 to 457-87612		B-13	B-14	
C-5-111	Drive Assembly	457-87613 to		C-1	C-2	
C-4-24	Drive Sub-Assemblies	A11		C-5	C-6	
C-6-49	Electrical Assembly	457-86101 to 457-88969		C-7	C-8	
C-6-47	Electrical Control Assembly	457-88970 to		C-9	C-10	
H1-20.0	*Etching Pencil Assembly	See Buttweider		D-13	D-14	H-3
C-2-79	Head Assembly	A11		C-11	C-12	
C-10-23	*Heavy Work Support Assembly	A11		D-1	D-2	
C-8-104	Job Selector Assembly	A11		D-3	D-4	
C-8-9	*Lamp Assembly	A11		D-5	D-6	
C-8-9	*Magnifier	A11		D-5	D-6	
C-8-12	*Mist Coolant Assembly	A11		D-7	D-8	
C-10-28	*Mitre Assembly (#2 Cut-Off)	A11		D-9	D-10	
C-5-107	Motor Base Assembly	A11		D-11	D-12	
C-10-42	*Protractor Work Stop and Alignment Gage Assembly (Air Table)	A11		D-13	D-14	
C-10-6	*Rip Fence Assembly	A11		E-1	E-2	
C-7-18	Saw Guide Assemblies (Insert Types) 1 of 2	A11		E-3	E-4	
C-7-20	Saw Guide Assemblies (Insert Types) 2 of 2	A11		E-5	E-6	
C-7-19	Saw Guide Assemblies (Roller Types)	A11		E-7	E-8	
C-3-53	*Sliding Table Assembly (Air Table)	A11		E-9	E-10	
C-4-24	Speed Indicator Assembly	457-86101 to 457-87612		C-5	C-6	
C-5-111	Speed Indicator Assembly	457-87613 to		C-1	C-2	
C-3-51	Table and Trunnion Assembly	A11		E-11	E-12	
C-3-54	*Table Cylinder Assembly (Air Table)	A11		F-1	F-2	
C-10-44	*Table Extension Assembly (Air Table)	A11		F-5	F-6	
C-4-44	Transmission Assembly	A11		F-7	F-8	
C-10-43	*Universally Calibrated Work Fixture Assembly (Air Table)	A11		F-9	F-10	
C-10-24	*Universal Vise Assembly (Air Table)	A11		F-11	F-12	
C-5-36	Variable Assembly (6P-A Speedmaster)	A11		F-13	F-14	
C-4-24	Variable Linkage Assembly	A11		C-5	C-6	
C-10-16	*Work Holding Jaw	A11		G-3	G-4	
	* Denotes Attachment or Assemblies of Attachments or Optional Equipment					

NEW DRG
SCL 3-5-85
REVISIONS
SCL 7-14-88



MODEL FIRST MACH. LAST MACH.
2013-V 457-86101

FINAL ASSEMBLY

C-1-64

PRINTED IN U.S.A.

FINAL ASSEMBLY

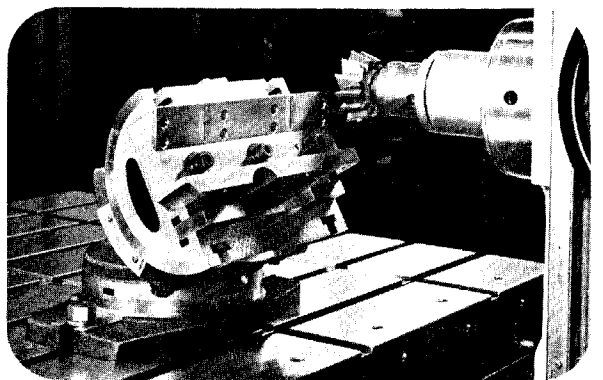
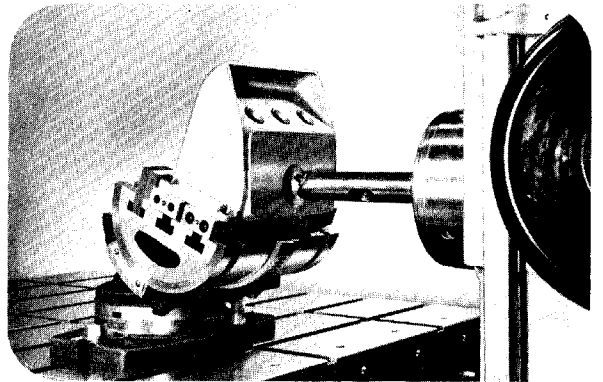
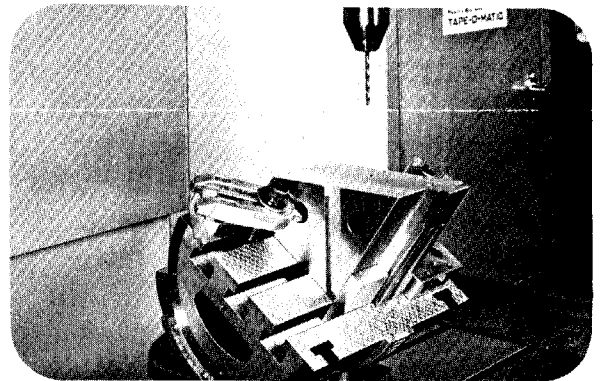
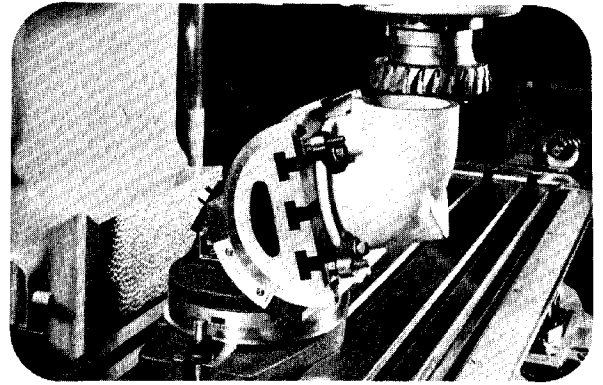
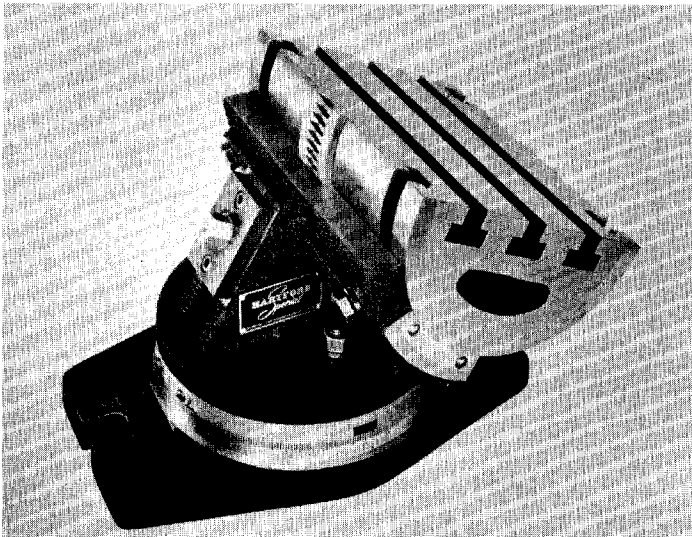
INDEX NO. Ref.	PART NO.	DESCRIPTION	UNITS PER ASS'Y
	290141	Final Assembly	
1	094-045226	. Chip Box Weldment.....	1
2	091-440594	. Escutcheon (Warning) (CSA Modifications).....	1
3	094-044765	. Escutcheon (Warning).....	1
4		. Electrical Control Assembly (See Detail).....	1
5	091-458828	. Escutcheon (Caution) (English).....	1
	091-496679	. Escutcheon (Caution) (International).....	1
6	095-130134	. Frame Weldment.....	1
7	094-140845	. Name Plate.....	1
8	091-987354	. Screw, Flat Hd. Self-Tap #10-24NC x 1/2 (Slotted).....	2
9	095-086336	. Head Assembly (See Detail).....	1
10	093-030294	. Post.....	1
11	093-060572	. Saw Band Guard Assembly.....	1
12	091-310334	. Escutcheon (Warning) (English).....	1
	091-314088	. Escutcheon (Warning) (International).....	1
13	091-715086	. Saw Band (Imperial Bi-Metal Super Silencer).....	1
14	093-045250	. Saw Band Tag.....	1
15	095-124772	. Table And Trunnion Assembly (See Detail).....	1
16	094-139656	. Guard Weldment (Standard).....	1
	094-144359	. Guard Weldment (Air Table Option).....	1
17	091-988675	. Screw, Rd. Hd. Mach. #10-24NC x 3/8.....	2
18	091-991117	. Nut, Hex. #10-24NC.....	2
19	091-993204	. Washer, Lock #10 Std.....	2
20	091-727628	. Latch.....	2
21	095-130126	. Drive Assembly (See Detail).....	1
22	094-140639	. Bottom Drive Cover Weldment.....	1
23	091-990192	. Screw, Truss Hd. Mach. 1/4-20NC x 3/8.....	8
24	095-128229	. Top Drive Cover.....	1
25	094-064011	. Saw Band Guard (Column).....	1
26	091-988972	. Screw, Rd. Hd. Mach. 1/4-20NC x 3/4.....	2
27	091-092940	. Shim (.065).....	A.R.
28	091-993741	. Washer, Lock 1/4 Shakeproof Ext.....	2
29	091-980052	. Screw, Hex. Hd. Cap 1/4-20NC x 3/8.....	1
30	091-993212	. Washer, Lock 1/4 Std.....	1
31	091-292730	. Escutcheon (Patent No's.).....	1
32	093-140903	. Escutcheon (Machine Spec's.) (English).....	1
	093-065167	. Escutcheon (Machine Spec's.) (International).....	1
33	091-993972	. Screw, Rd. Hd. Drive #2 x 1/4.....	16
34	091-006668	. Escutcheon (DoALL) (CSA Modification).....	1

Following Not Shown:

094-068715	. Instruction Tag.....	1
071-681712	. Instruction Manual.....	1
071-681720	. Parts Manual.....	1
091-700914	. Box of Extra Parts.....	1
090-041419	. . Saw Guide Insert Pack (See Detail).....	1
090-280819	. . Upper Saw Guide Assembly (High Speed) (See Detail)....	1
090-280827	. . Lower Saw Guide Assembly (High Speed) (See Detail)....	1
090-285000	. . Upper Saw Guide Holding Screw.....	2
091-982462	. . Screw, Soc. Hd. Cap 1/4-20NC x 1-3/4 (Lower Saw Guide)	2
091-995688	. . Hex Key 5/16".....	1
090-108531	. . Wrench (Table Tilt).....	1

Hartford Super Table

MODEL 810



FEATURES

- Work table rotates in 110° arc, then locks for rigidity.
- Saddle rotates 360° on base, vernier insures accurate positioning.
- Table and key-slotted saddle can be removed from rotary base and mounted directly to machine table, if special applications make this desirable. This will reduce height by 1.875".
- Single wrench fits all nuts and worm wheel and is removable for safety during machining.
- Made of precision machined high strength castings.
- Durable black crackle finish withstands shop use.

SPECIFICATIONS

Base.....	8 ⁵ / ₈ " wide x 13" long
Table.....	8" wide x 10" long
Height—Horizontal Position.....	7 ⁵ / ₈ "
Table Graduations.....	110° (in 5 minute increments)
Base Graduations.....	360° (in 5 minute increments)
Size of T-slots.....	.625"
Weight.....	112#

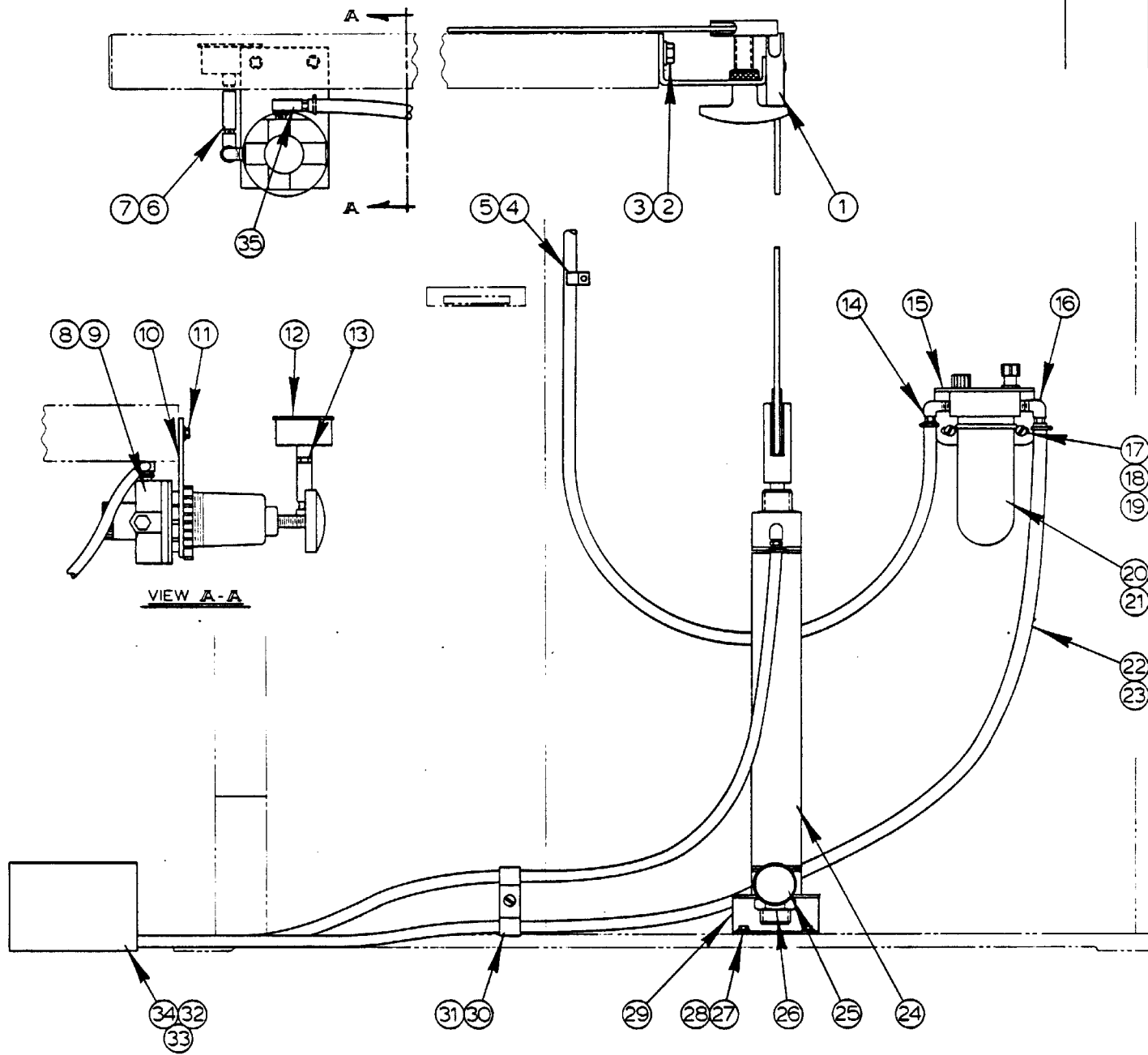
THE HARTFORD SPECIAL MACHINERY CO. ■ COLLEGE HIGHWAY, SIMSBURY, CONN. 06070
 BRANCH OFFICES IN LOS ANGELES, CHICAGO, DETROIT

Telephone (203) 658-7601

Telex 099230

Cable Address: Special

*A registered Trade Mark of the Hartford Special Machinery Co.



NOTE: THIS ASSEMBLY REPLACES
WEIGHT FEED ASSEMBLY.

MODEL	FIRST MACH	LAST MACH
2013-V	457 - 86101	
2013-20	377 - 861284	
2614-1	364 - 86254	
3613-1	440 - 86214	
3613-20	399 - 86628	

AIR FEED ASSEMBLY

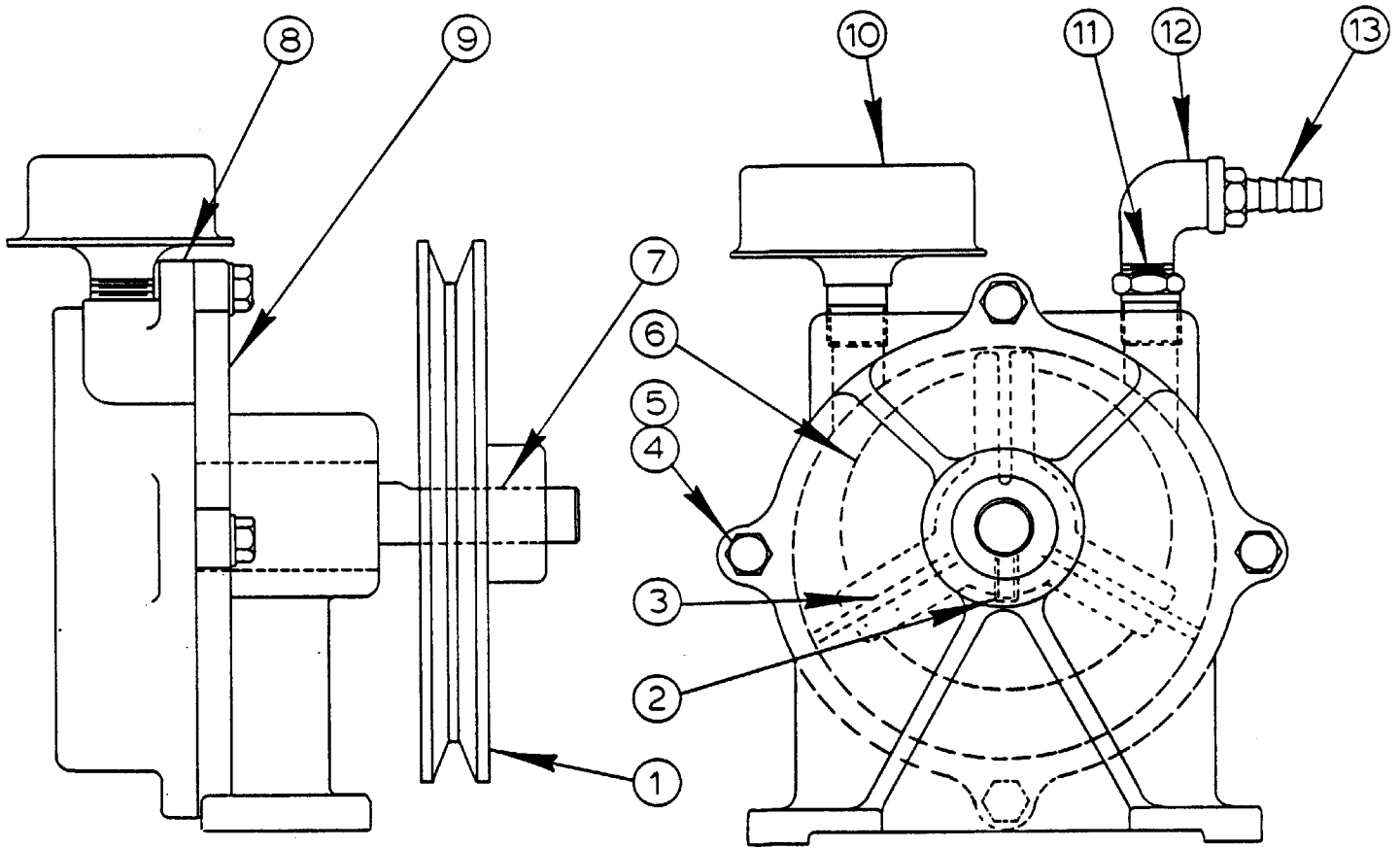
C - 9 - 22

PRINTED IN U.S.A.

AIR FEED ASSEMBLY

INDEX NO.	PART NO.	DESCRIPTION	UNITS PER ASS'Y
Ref.	085-130870	Air Feed Assembly	
1	094-144292	. Carrier and Cable Assembly (Air Feed) (See Detail).....	1
2	091-980441	. Screw, Hex. Hd. Cap 3/8-16NC x 3/4.....	3
3	091-993329	. Washer, Lock 3/8 Std.....	3
4	091-323758	. Conduit Strap.....	1
5	091-994848	. Screw, Rd. Hd. Self-Tap 1/4-20NC x 1/2.....	1
6	090-121187	. Pipe Nipple.....	1
7	135-003069	. Pipe Coupling.....	1
8	091-256743	. Regulating Valve.....	1
9	091-227488	. Pipe Plug.....	1
10	093-153658	. Bracket.....	1
11	091-980086	. Screw, Hex. Hd. Cap 1/4-20NC x 3/4.....	2
12	135-095305	. Gauge.....	1
13	091-343517	. Hex. Reducer Bushing.....	2
14	090-020041	. Barbed Insert.....	3
15	091-458844	. Bracket.....	1
16	117-135210	. 90° Street Elbow.....	6
17	091-988964	. Screw, Rd. Hd. Mach. 1/4-20NC x 5/8.....	2
18	091-993741	. Washer, Lock 1/4 Shakeproof Ext.....	2
19	091-991158	. Nut, Hex. 1/4-20NC.....	2
20	091-458836	. Oil-Fog Lubricator.....	1
21	091-384453	. Oil (ASTM 315).....	A.R.
22	091-970947	. Neoprene Hose 11/16 O.D. (Black).....	A.R.
23	135-068880	. Hose Clamp.....	6
24	091-727941	. Air Cylinder.....	1
25	091-696310	. Air Filter.....	1
26	091-991471	. Nut, Hex. Jam 1-14NF.....	1
27	091-980060	. Screw, Hex. Hd. Cap 1/4-20NC x 1/2.....	4
28	091-993212	. Washer, Lock 1/4 Std.....	8
29	093-154409	. Bracket.....	1
30	090-111527	. Tubing Clamp.....	1
31	091-994848	. Screw, Rd. Hd. Self-Tap 1/4-20NC x 1/2.....	1
32	091-727933	. Foot Valve.....	1
33	091-727925	. Guard.....	1
34	091-281790	. Barbed Insert.....	3
35	105-275069	. 90° Street Elbow.....	1
Following not shown:			
	091-992602	. Washer, Flat 1/4 S.A.E. Std.....	2

NEW DRG.
SCL. 10-31-84
REVISIONS
SCL. 9-6-85



MODEL	FIRST MACH.	LAST MACH.
2614-1	364-76101	364-84236
2013-20	377-77101	377-841185
2012-2A	389-77101	389-84387
2013-2	396-78101	396-84257
3613-2	398-78101	398-84166
3613-20	399-78101	399-84556
E3613-20	410-79101	410-84113
2013-U	411-80101	411-83444
E2013-U	420-81101	420-82104
2013-V	439-83101	439-86905
2013-V	457-86101	
3613-1	440-86197	

AIR PUMP ASSEMBLY

C - 8 - 10

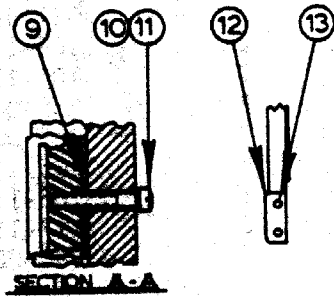
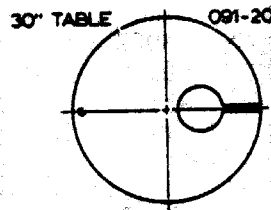
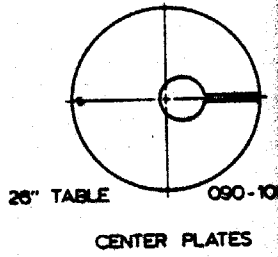
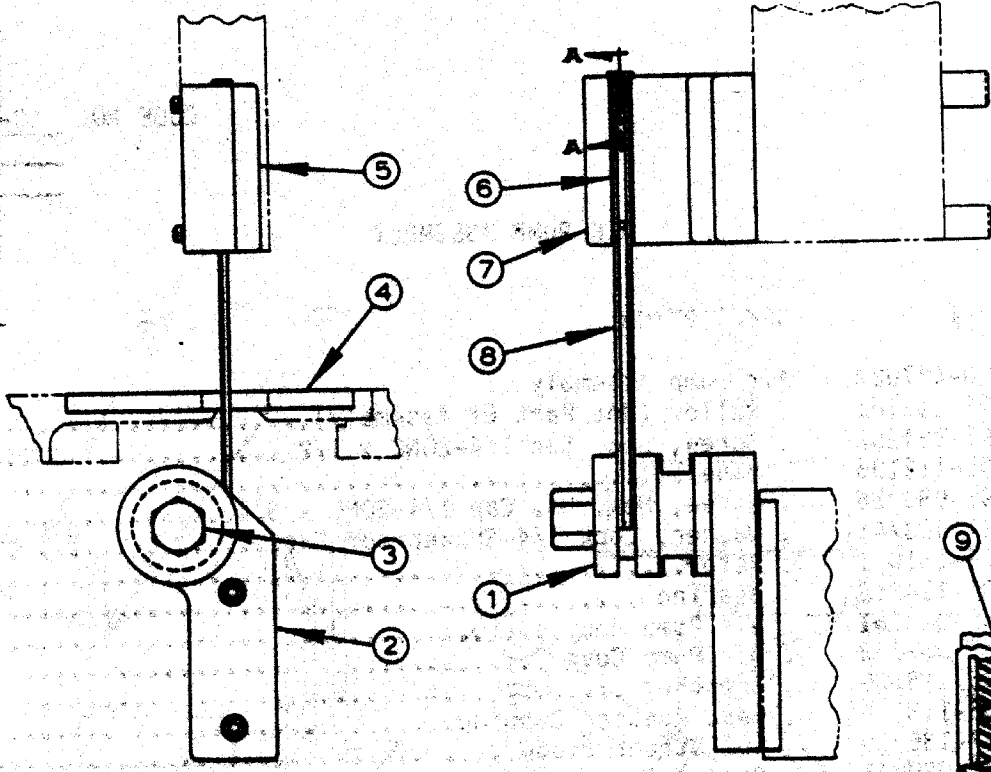
PRINTED IN U. S. A.

A-7

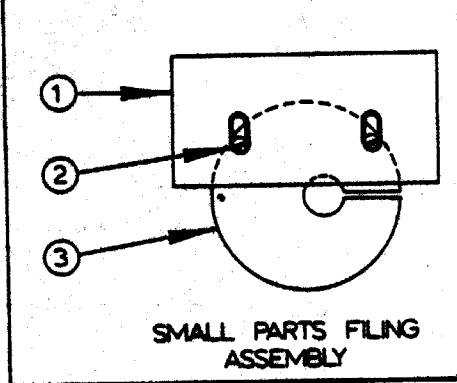
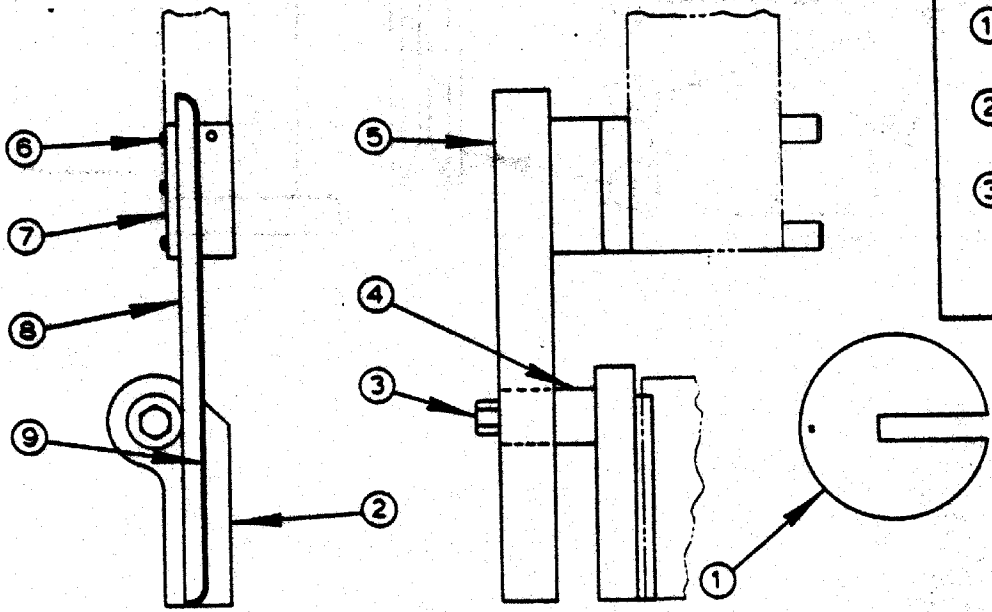
AIR PUMP ASSEMBLY

INDEX NO. Ref.	PART NO.	DESCRIPTION	UNITS PER ASS'Y
	090-427089	Air Pump Assembly	
1	105-113161	. Pulley (Not Part Of Assembly).....	1
2	091-984252	. Screw, Soc. Set 1/4-20NC x 1/2.....	2
3	105-113195	. Vane.....	3
4	091-980086	. Screw, Hex. Hd. Cap 1/4-20NC x 3/4.....	4
5	091-993741	. Washer, Lock 1/4 Shakeproof Ext.....	4
6	105-111041	. Rotor.....	1
7	105-114052	. Bearing.....	1
8	135-067361	. Air Pump Body.....	1
9	135-067353	. Air Pump Cover.....	1
10	105-115109	. Breather.....	1
11	105-115174	. Hex. Reducer Bushing.....	1
12	117-135210	. 90° Street Elbow.....	1
13	090-020041	. Barbed Insert.....	1

REVISED 200
 REVISION
 02/11/00

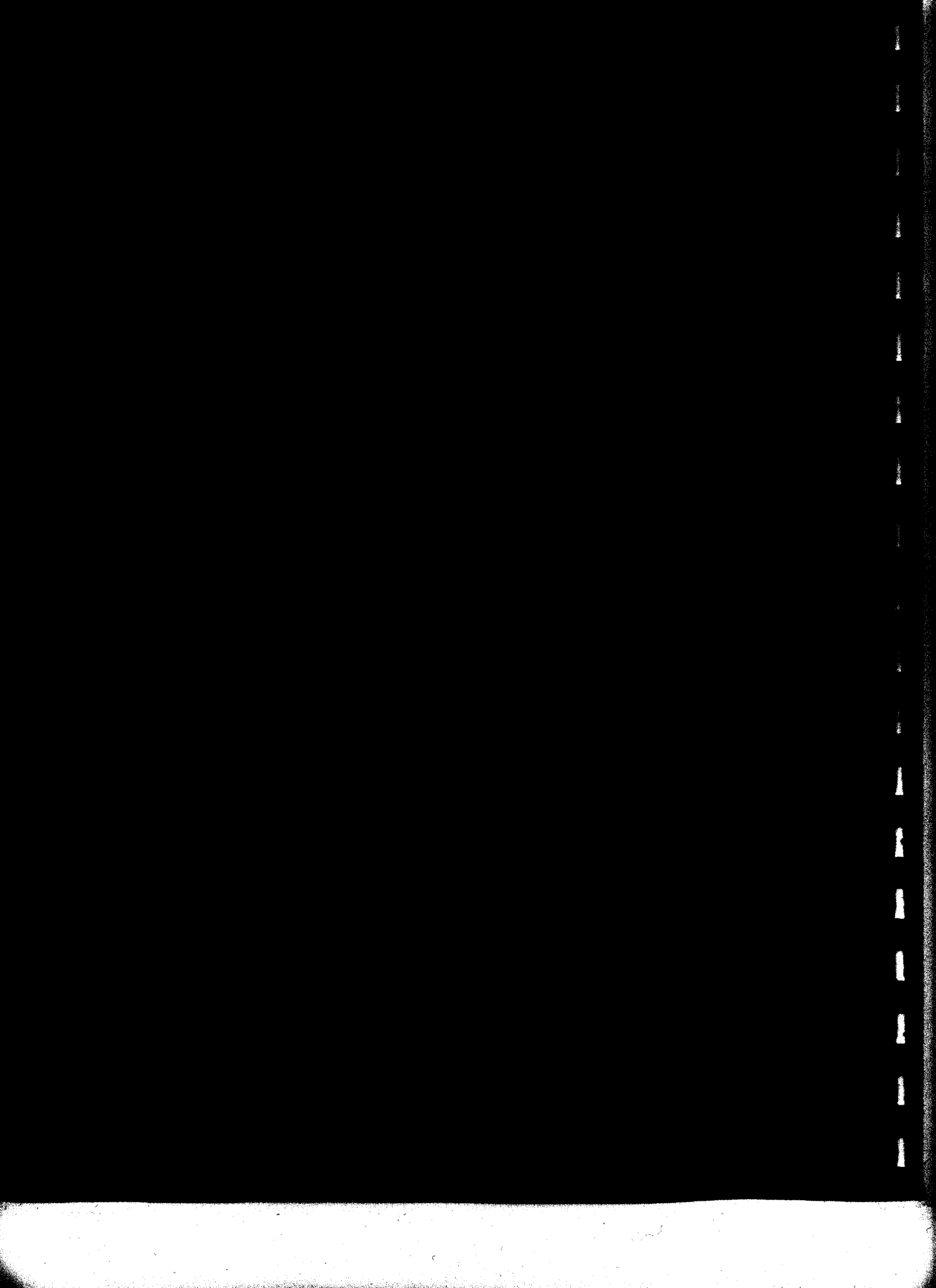


BAND FILING ASSEMBLY



BAND POLISHING ASSEMBLY

USED ON UPRIGHT
 WHEN APPLICABLE



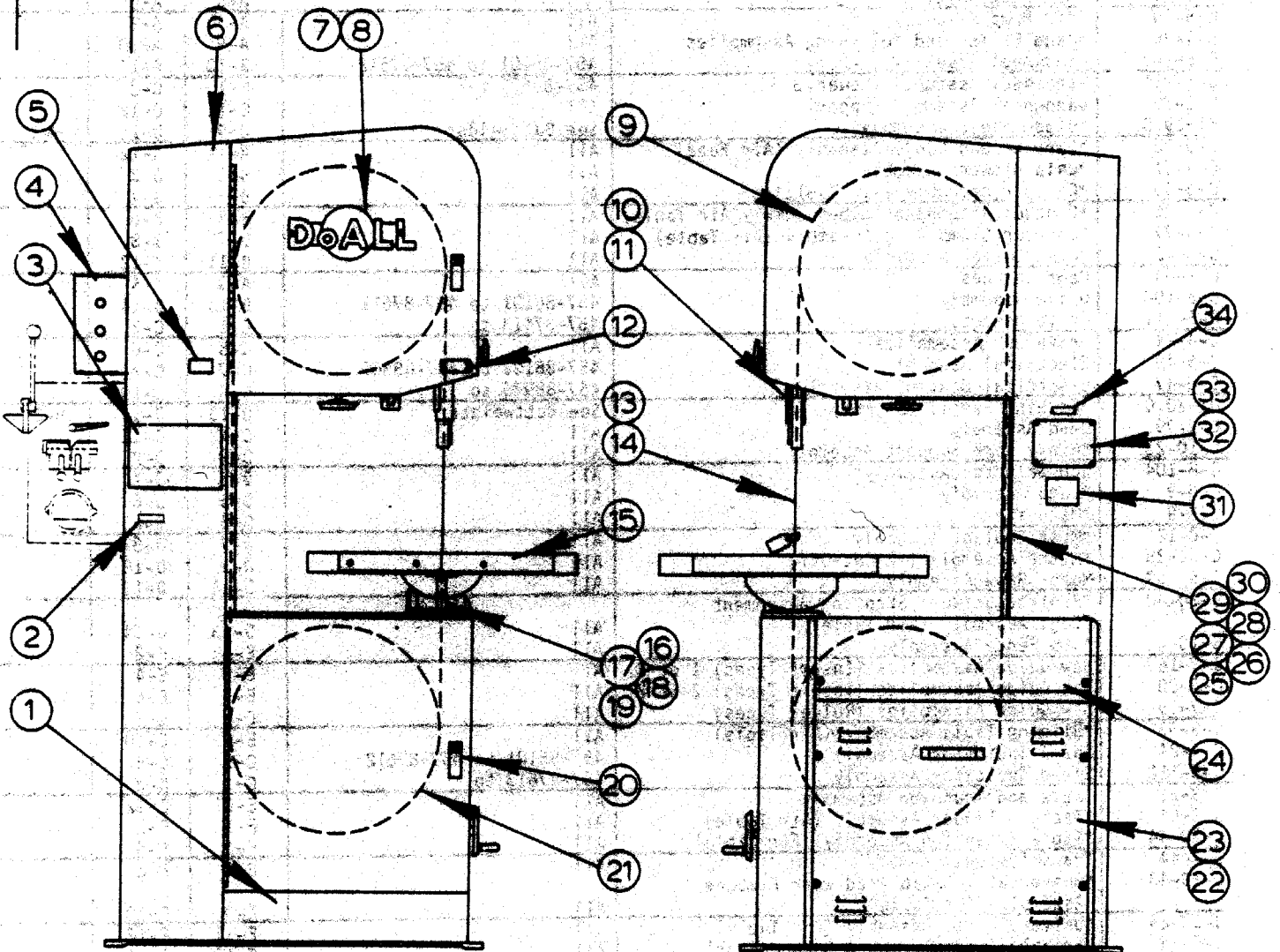
FICHE NO. C-13 CLASS Utility MODEL 2013-V SERIAL NO. 457-86101 TO

PAGE NO.	DESCRIPTION	FIRST SERIAL	LAST SERIAL	FRAME NO.		FICHE NO.
				DWG.	P. LIST	
C-1-64	Final Assembly	All		A-3	A-4	
C-5-107	*Air Compressor (Mist Coolant, Air Table)	All		D-11	D-12	
C-9-22	*Air Feed Assembly	All		A-5	A-6	
C-8-10	*Air Pump Assembly	All		A-7	A-8	
C-7-26	*Band Filing and Polishing Assemblies	All		A-9	A-10	
C-5-109	Bandwheel Assembly (Lower)	457-86101 to 457-87612		B-13	B-14	
C-5-111	Bandwheel Assembly (Lower)	457-87613 to		C-1	C-2	
C-2-79	Bandwheel Assembly (Upper)	All		C-11	C-12	
H1-19.0	*Blade Shear Assembly	See Buttweider		D-9	D-10	H-3
C-9-23	*Carrier and Cable Assembly (Air Feed)	All		A-11	A-12	
C-9-21	*Chip Blower Assembly	All		B-1	B-2	
C-3-75	*Contour Assembly (Air Table)	All		B-3	B-4	
C-3-76	*Contour Attachment Sub-Assembly (Air Table)	All		B-5	B-6	
C-3-77	*Contour Clamp Ring Assembly (Air Table)	All		B-7	B-8	
C-10-2	*Disc Cutter Assembly	All		B-11	B-12	
C-1-64	Door Latches	All		A-3	A-4	
C-5-108	Drive Assembly	457-86101 to 457-87612		B-13	B-14	
C-5-111	Drive Assembly	457-87613 to		C-1	C-2	
C-4-24	Drive Sub-Assemblies	All		C-5	C-6	
C-6-49	Electrical Assembly	457-86101 to 457-88969		C-7	C-8	
C-6-47	Electrical Control Assembly	457-88970 to		C-9	C-10	
H1-20.0	*Etching Pencil Assembly	See Buttweider		D-13	D-14	H-3
C-2-79	Head Assembly	All		C-11	C-12	
C-10-23	*Heavy Part Support Assembly	All		D-1	D-2	
C-8-104	Job Selector Assembly	All		D-3	D-4	
C-8-9	*Lamp Assembly	All		D-5	D-6	
C-8-9	*Magnifier	All		D-5	D-6	
C-8-12	*Mist Coolant Assembly	All		D-7	D-8	
C-10-28	*Mitre Assembly (#2 Cut-Off)	All		D-9	D-10	
C-5-107	Motor Base Assembly	All		D-11	D-12	
C-10-42	*Protractor Work Stop and Alignment Gage Assembly (Air Table)	All		D-13	D-14	
C-10-6	*Rip Fence Assembly	All		E-1	E-2	
C-7-18	Saw Guide Assemblies (Insert Types) 1 of 2	All		E-3	E-4	
C-7-20	Saw Guide Assemblies (Insert Types) 2 of 2	All		E-5	E-6	
C-7-19	Saw Guide Assemblies (Roller Types)	All		E-7	E-8	
C-3-53	*Sliding Table Assembly (Air Table)	All		E-9	E-10	
C-4-24	Speed Indicator Assembly	457-86101 to 457-87612		C-5	C-6	
C-5-111	Speed Indicator Assembly	457-87613 to		C-1	C-2	
C-3-51	Table and Trunnion Assembly	All		E-11	E-12	
C-3-54	*Table Cylinder Assembly (Air Table)	All		F-1	F-2	
C-10-44	*Table Extension Assembly (Air Table)	All		F-5	F-6	
C-4-44	Transmission Assembly	All		F-7	F-8	
C-10-43	*Universally Calibrated Work Fixture Assembly (Air Table)	All		F-9	F-10	
C-10-24	Universal Vise Assembly (Air Table)	All		F-11	F-12	
C-5-36	Variable Assembly (60-A Speedmaster)	All		F-13	F-14	
C-4-24	Variable Linkage Assembly	All		C-5	C-6	
C-10-16	*Work Holding Jaw	All		G-3	G-4	

* Denotes Attachment or Assemblies of Attachments or Optional Equipment

NEW DRG
 SCL 3-5-85

REVISIONS
 SCL 7-14-88



MODEL FIRST MACH. LAST MACH.
 2013-V 457-86101

FINAL ASSEMBLY

C-1-64

PRINTED IN U. S. A.

A-3

FINAL ASSEMBLY

INDEX NO. Ref.	PART NO.	DESCRIPTION	UNITS PER ASS'Y
	290141	Final Assembly	
1	094-045226	. Chip Box Weldment.....	1
2	091-440594	. Escutcheon (Warning) (CSA Modifications).....	1
3	094-044765	. Escutcheon (Warning).....	1
4		. Electrical Control Assembly (See Detail).....	1
5	091-458828	. Escutcheon (Caution) (English).....	1
	091-496679	. Escutcheon (Caution) (International).....	1
6	095-130134	. Frame Weldment.....	1
7	094-140846	. Name Plate.....	1
8	091-987354	. Screw, Flat Hd. Self-Tap #10-24NC x 1/2 (Slotted).....	2
9	095-086336	. Head Assembly (See Detail).....	1
10	093-030294	. Post.....	1
11	093-060572	. Saw Band Guard Assembly.....	1
12	091-310334	. Escutcheon (Warning) (English).....	1
	091-314088	. Escutcheon (Warning) (International).....	1
13	091-715086	. Saw Band (Imperial Bi-Metal Super Silencer).....	1
14	093-045250	. Saw Band Tag.....	1
15	095-124772	. Table And Trunnion Assembly (See Detail).....	1
16	094-139656	. Guard Weldment (Standard).....	1
	094-144359	. Guard Weldment (Air Table Option).....	1
17	091-988675	. Screw, Rd. Hd. Mach. #10-24NC x 3/8.....	2
18	091-991117	. Nut, Hex. #10-24NC.....	2
19	091-993204	. Washer, Lock #10 Std.....	2
20	091-727628	. Latch.....	2
21	095-130126	. Drive Assembly (See Detail).....	1
22	094-140639	. Bottom Drive Cover Weldment.....	1
23	091-990192	. Screw, Truss Hd. Mach. 1/4-20NC x 3/8.....	8
24	095-128229	. Top Drive Cover.....	1
25	094-064011	. Saw Band Guard (Column).....	1
26	091-988972	. Screw, Rd. Hd. Mach. 1/4-20NC x 3/4.....	2
27	091-092340	. Shim (.065).....	A.R.
28	091-993741	. Washer, Lock 1/4 Shakeproof Ext.....	2
29	091-980052	. Screw, Hex. Hd. Cap 1/4-20NC x 3/8.....	1
30	091-993212	. Washer, Lock 1/4 Std.....	1
31	091-292730	. Escutcheon (Patent No's.).....	1
32	093-140903	. Escutcheon (Machine Spec's.) (English).....	1
	093-065167	. Escutcheon (Machine Spec's.) (International).....	1
33	091-993972	. Screw, Rd. Drive #2 x 1/4.....	16
34	091-006668	. Escutcheon (DoALL) (CSA Modification).....	1

Following Not Shown:

094-066715	. Instruction Tag.....	1
071-681712	. Instruction Manual.....	1
071-681720	. Parts Manual.....	1
091-700914	. Box of Extra Parts.....	1
090-041419	. . Saw Guide Insert Pack (See Detail).....	1
090-280819	. . Upper Saw Guide Assembly (High Speed) (See Detail)....	1
090-280827	. . Lower Saw Guide Assembly (High Speed) (See Detail)....	1
090-285000	. . Upper Saw Guide Holding Screw.....	2
091-982462	. . Screw, Soc. Hd. Cap 1/4-20NC x 1-3/4 (Lower Saw Guide)	2
091-995688	. . Hex Key 5/16".....	1
090-108531	. . Wrench (Table Tilt).....	1

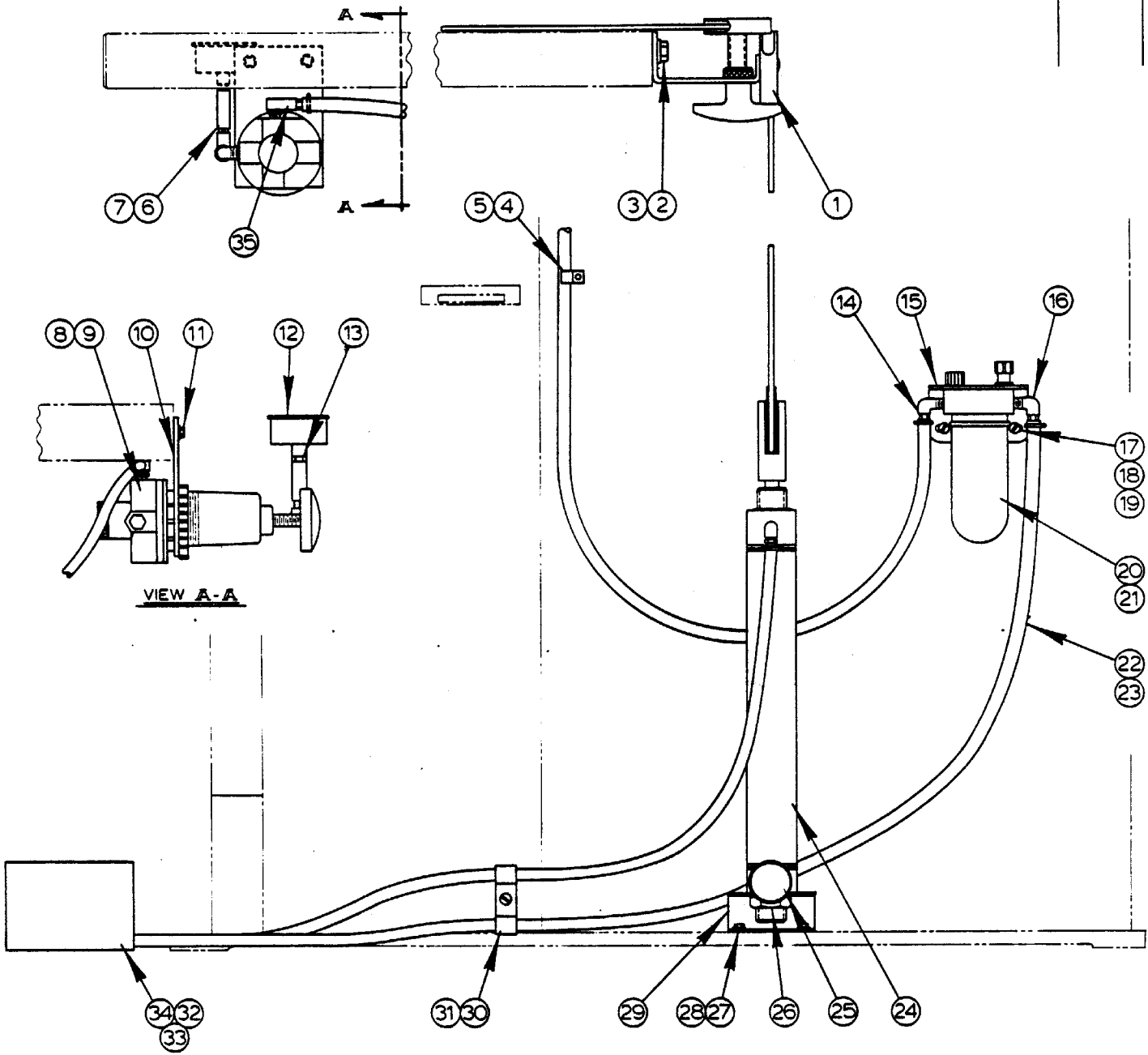
FINAL ASSEMBLY

INDEX NO. Ref.	PART NO.	DESCRIPTION	UNITS PER ASS'Y
	290141	Final Assembly	
1	094-045226	. Chip Box Weldment.....	1
2	091-440594	. Escutcheon (Warning) (CSA Modifications).....	1
3	094-044765	. Escutcheon (Warning).....	1
4		. Electrical Control Assembly (See Detail).....	1
5	091-458828	. Escutcheon (Caution) (English).....	1
	091-496679	. Escutcheon (Caution) (International).....	1
6	095-130134	. Frame Weldment.....	1
7	094-140845	. Name Plate.....	1
8	091-987354	. Screw, Flat Hd. Self-Tap #10-24NC x 1/2 (Slotted).....	2
9	095-086336	. Head Assembly (See Detail).....	1
10	093-030294	. Post.....	1
11	093-060572	. Saw Band Guard Assembly.....	1
12	091-310334	. Escutcheon (Warning) (English).....	1
	091-314088	. Escutcheon (Warning) (International).....	1
13	091-715086	. Saw Band (Imperial Bi-Metal Super Silencer).....	1
14	093-045250	. Saw Band Tag.....	1
15	095-124772	. Table And Trunnion Assembly (See Detail).....	1
16	094-139656	. Guard Weldment (Standard).....	1
	094-144359	. Guard Weldment (Air Table Option).....	1
17	091-988675	. Screw, Rd. Hd. Mach. #10-24NC x 3/8.....	2
18	091-991117	. Nut, Hex. #10-24NC.....	2
19	091-993204	. Washer, Lock #10 Std.....	2
20	091-727628	. Latch.....	2
21	095-130126	. Drive Assembly (See Detail).....	1
22	094-140639	. Bottom Drive Cover Weldment.....	1
23	091-990192	. Screw, Truss Hd. Mach. 1/4-20NC x 3/8.....	8
24	095-128229	. Top Drive Cover.....	1
25	094-064011	. Saw Band Guard (Column).....	1
26	091-988972	. Screw, Rd. Hd. Mach. 1/4-20NC x 3/4.....	2
27	091-092940	. Shim (.065).....	A.R.
28	091-993741	. Washer, Lock 1/4 Shakeproof Ext.....	2
29	091-980052	. Screw, Hex. Hd. Cap 1/4-20NC x 3/8.....	1
30	091-993212	. Washer, Lock 1/4 Std.....	1
31	091-292730	. Escutcheon (Patent No's.).....	1
32	093-140903	. Escutcheon (Machine Spec's.) (English).....	1
	093-065167	. Escutcheon (Machine Spec's.) (International).....	1
33	091-993972	. Screw, Rd. Hd. Drive #2 x 1/4.....	16
34	091-006668	. Escutcheon (DoALL) (CSA Modification).....	1

Following Not Shown:

094-068715	. Instruction Tag.....	1
071-681712	. Instruction Manual.....	1
071-681720	. Parts Manual.....	1
091-700914	. Box of Extra Parts.....	1
090-041419	. . Saw Guide Insert Pack (See Detail).....	1
090-280819	. . Upper Saw Guide Assembly (High Speed) (See Detail)....	1
090-280827	. . Lower Saw Guide Assembly (High Speed) (See Detail)....	1
090-285000	. . Upper Saw Guide Holding Screw.....	2
091-982462	. . Screw, Soc. Hd. Cap 1/4-20NC x 1-3/4 (Lower Saw Guide)	2
091-995688	. . Hex Key 5/16".....	1
090-108531	. . Wrench (Table Tilt).....	1

NEW DRG.
S.C.L. 4-9-86
REVISIONS
S.C.L. 4-30-87



NOTE: THIS ASSEMBLY REPLACES
WEIGHT FEED ASSEMBLY.

MODEL	FIRST MACH	LAST MACH
2013-V	457-86101	
2013-20	377-861284	
2614-1	364-86254	
3613-1	440-86214	
3613-20	399-86628	

AIR FEED ASSEMBLY

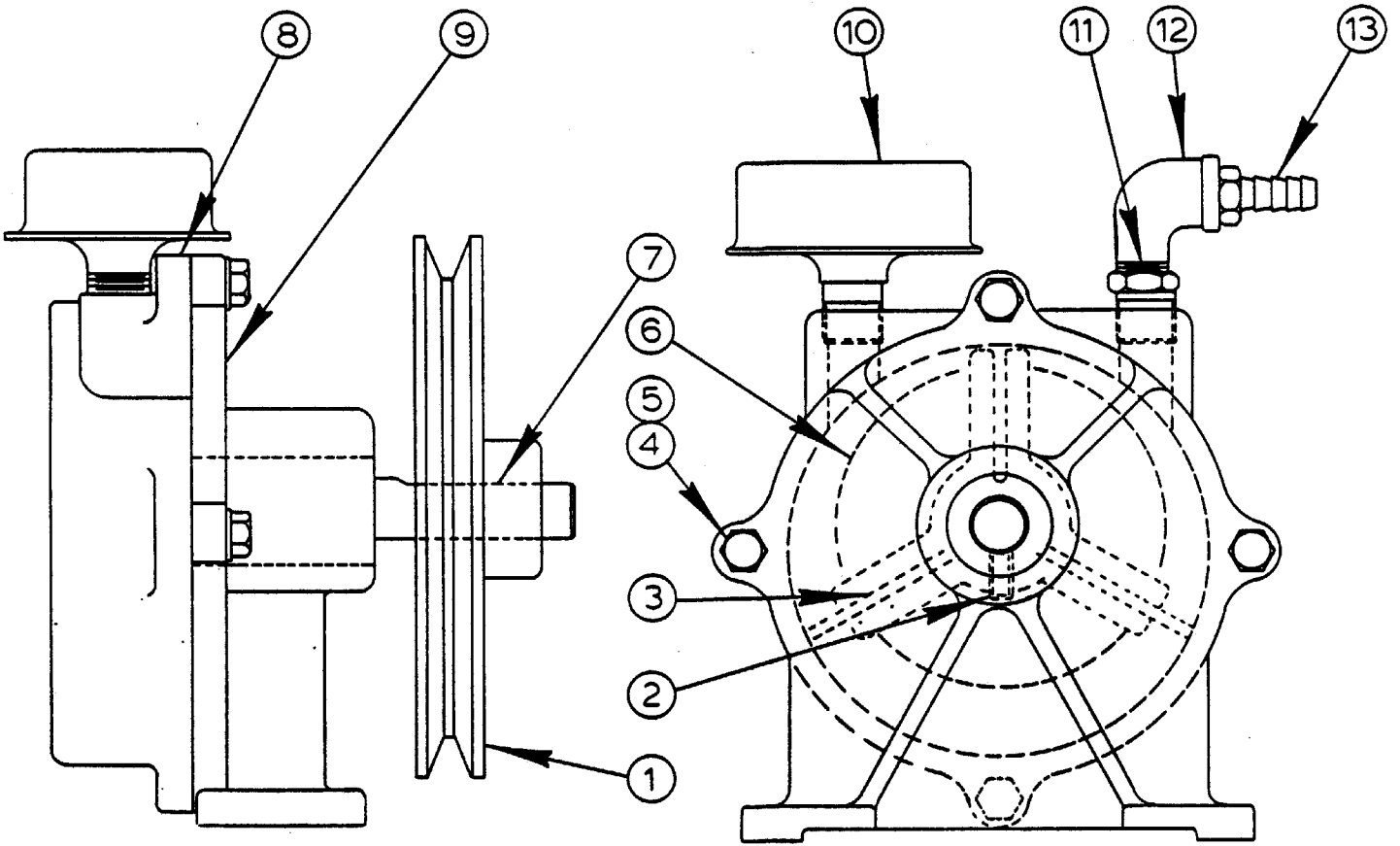
C-9-22

PRINTED IN U.S.A.

AIR FEED ASSEMBLY

INDEX NO. Ref.	PART NO.	DESCRIPTION	UNITS PER ASS'Y
	085-130870	Air Feed Assembly	
1	094-144292	. Carrier and Cable Assembly (Air Feed) (See Detail).....	1
2	091-980441	. Screw, Hex. Hd. Cap 3/8-16NC x 3/4.....	3
3	091-993329	. Washer, Lock 3/8 Std.....	3
4	091-323758	. Conduit Strap.....	1
5	091-994848	. Screw, Rd. Hd. Self-Tap 1/4-20NC x 1/2.....	1
6	090-121187	. Pipe Nipple.....	1
7	135-003069	. Pipe Coupling.....	1
8	091-256743	. Regulating Valve.....	1
9	091-227488	. Pipe Plug.....	1
10	093-153658	. Bracket.....	1
11	091-980086	. Screw, Hex. Hd. Cap 1/4-20NC x 3/4.....	2
12	135-095305	. Gauge.....	1
13	091-343517	. Hex. Reducer Bushing.....	2
14	090-020041	. Barbed Insert.....	3
15	091-458844	. Bracket.....	1
16	117-135210	. 90° Street Elbow.....	6
17	091-988964	. Screw, Rd. Hd. Mach. 1/4-20NC x 5/8.....	2
18	091-993741	. Washer, Lock 1/4 Shakeproof Ext.....	2
19	091-991158	. Nut, Hex. 1/4-20NC.....	2
20	091-458836	. Oil-Fog Lubricator.....	1
21	091-384453	. Oil (ASTM 315).....	A.R.
22	091-970947	. Neoprene Hose 11/16 O.D. (Black).....	A.R.
23	135-068880	. Hose Clamp.....	6
24	091-727941	. Air Cylinder.....	1
25	091-696310	. Air Filter.....	1
26	091-991471	. Nut, Hex. Jam 1-14NF.....	1
27	091-980060	. Screw, Hex. Hd. Cap 1/4-20NC x 1/2.....	4
28	091-993212	. Washer, Lock 1/4 Std.....	8
29	093-154409	. Bracket.....	1
30	090-111527	. Tubing Clamp.....	1
31	091-994848	. Screw, Rd. Hd. Self-Tap 1/4-20NC x 1/2.....	1
32	091-727933	. Foot Valve.....	1
33	091-727925	. Guard.....	1
34	091-281790	. Barbed Insert.....	3
35	105-275069	. 90° Street Elbow.....	1
Following not shown:			
	091-992602	. Washer, Flat 1/4 S.A.E. Std.....	2

NEW DRG.
SCL. 10-31-84
REVISIONS
SCL. 9-6-85



<u>MODEL</u>	<u>FIRST MACH.</u>	<u>LAST MACH.</u>
2614-1	364-76101	364-84236
2013-20	377-77101	377-841185
2012-2A	389-77101	389-84387
2013-2	396-78101	396-84257
3613-2	398-78101	398-84166
3613-20	399-78101	399-84556
E3613-20	410-79101	410-84113
2013-U	411-80101	411-83444
E2013-U	420-81101	420-82104
2013-V	439-83101	439-86905
2013-V	457-86101	
3613-1	440-86197	

AIR PUMP ASSEMBLY

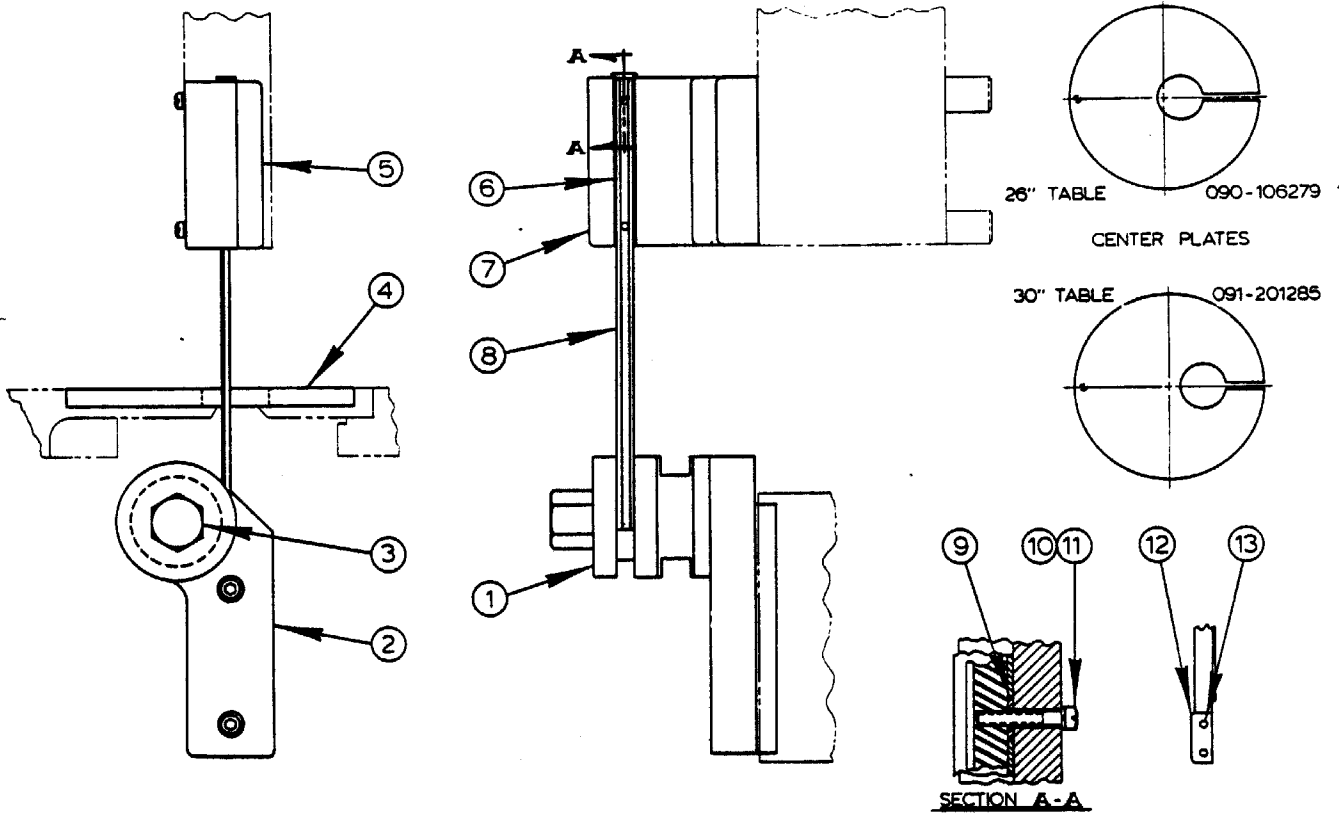
C - 8 - 10

PRINTED IN U. S. A.

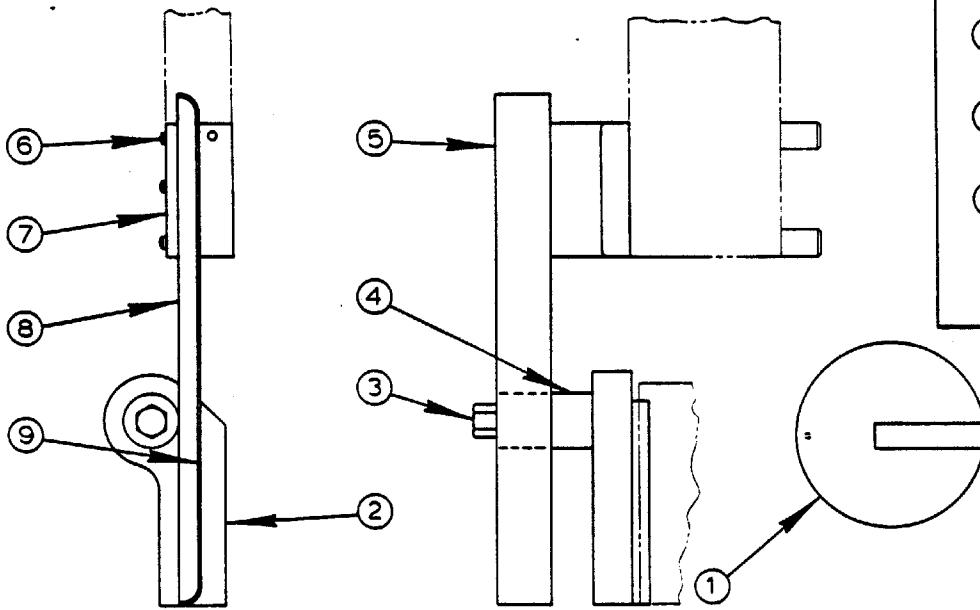
AIR PUMP ASSEMBLY

INDEX NO. Ref.	PART NO.	DESCRIPTION	UNITS PER ASS'Y
	090-427089	Air Pump Assembly	
1	105-113161	. Pulley (Not Part Of Assembly).....	1
2	091-984252	. Screw, Soc. Set 1/4-20NC x 1/2.....	2
3	105-113195	. Vane.....	3
4	091-980086	. Screw, Hex. Hd. Cap 1/4-20NC x 3/4.....	4
5	091-993741	. Washer, Lock 1/4 Shakeproof Ext.....	4
6	105-111041	. Rotor.....	1
7	105-114052	. Bearing.....	1
8	135-067361	. Air Pump Body.....	1
9	135-067353	. Air Pump Cover.....	1
10	105-115109	. Breather.....	1
11	105-115174	. Hex. Reducer Bushing.....	1
12	117-135210	. 90° Street Elbow.....	1
13	090-020041	. Barbed Insert.....	1

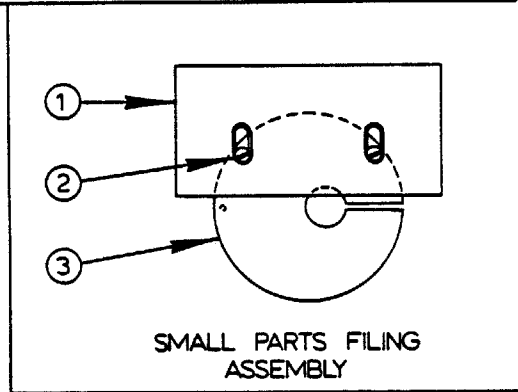
REVISED AND
REDRAWN
S.C.L. 12-1-83



BAND FILING ASSEMBLY



BAND POLISHING ASSEMBLY



USED ON UPRIGHT SAWS
WHEN APPLICABLE.