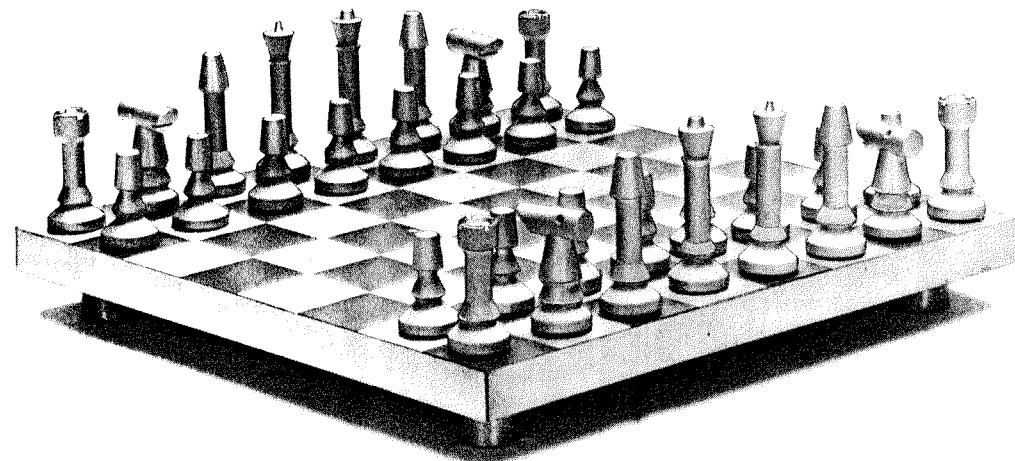
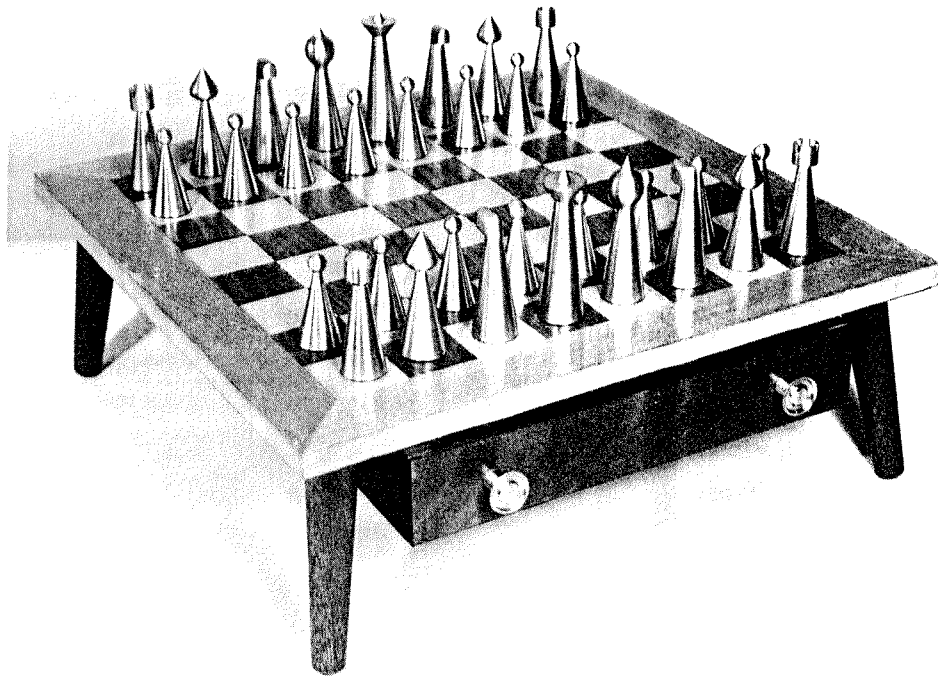


SPACE AGE CHESS SET

THIS IS AN EXCELLENT PROJECT FOR ADVANCED METAL SHOP STUDENTS IN METAL TURNING. THE ALUMINUM AND BRASS SET CAPTURES THE SPIRIT AND DIRECTION OF THE SPACE AGE.

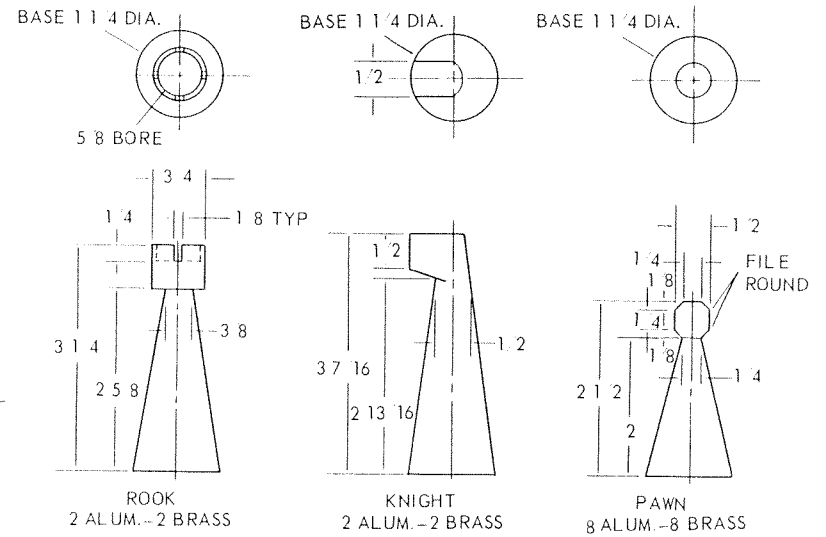
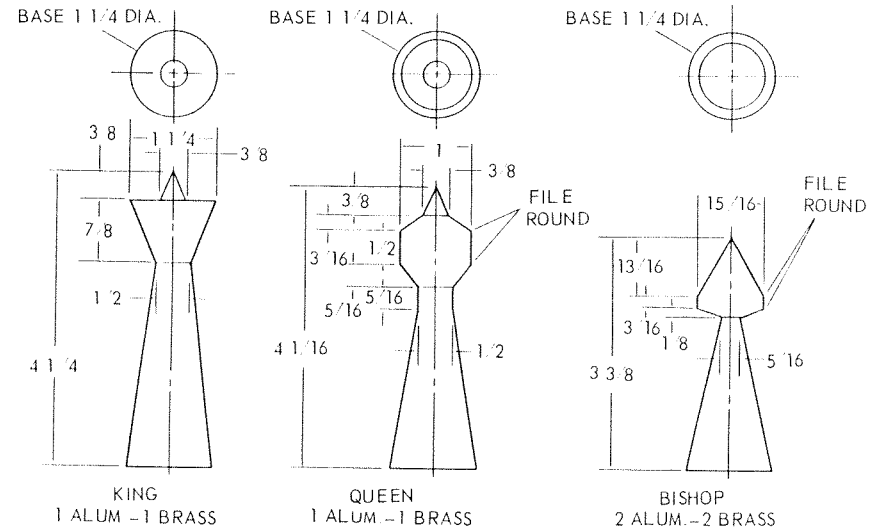
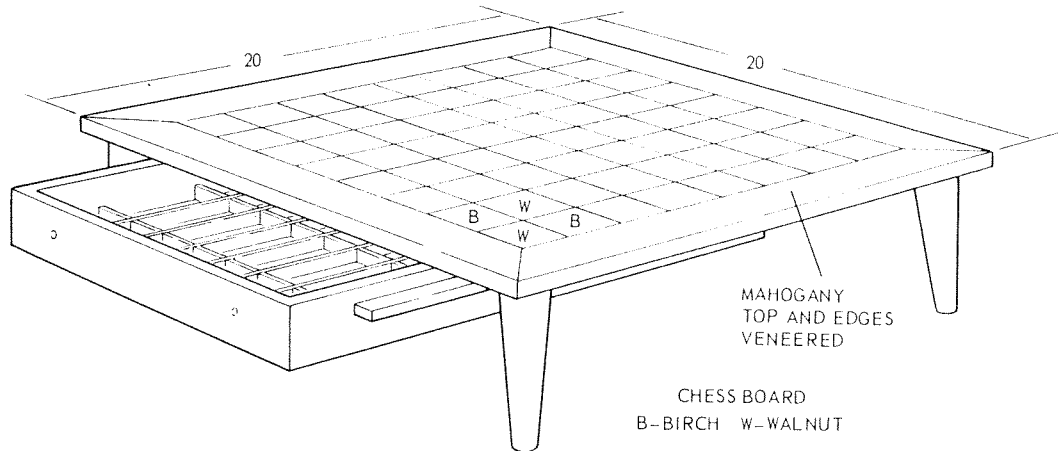
ROUND ALUMINUM AND BRASS STOCK IS ALL THAT IS NEEDED FOR THE CHESS PIECES. THE BOARD SQUARES MAY BE CUT FROM ALUMINUM AND BRASS SHEET MATERIAL. ALL POLISHED PARTS WILL RETAIN THEIR BRIGHTNESS BY SPRAYING WITH CLEAR LACQUER. FELT PADS MAY BE USED ON BASES OF THE CHESS PIECES SO AS NOT TO MAR THE BOARD.





MODERNISTIC CHESS SET

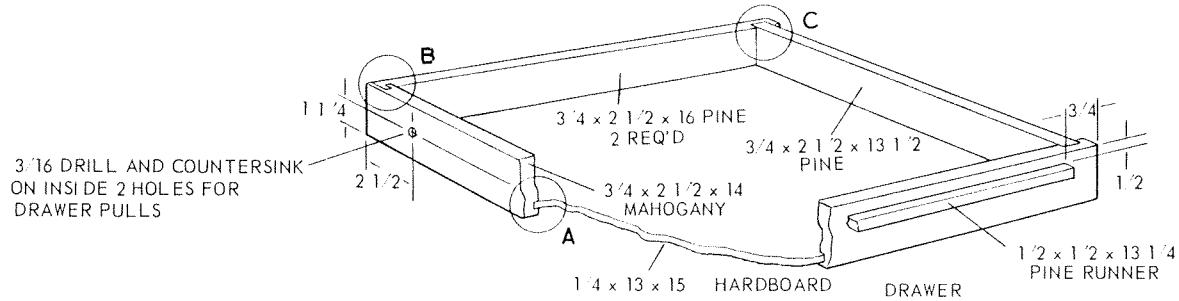
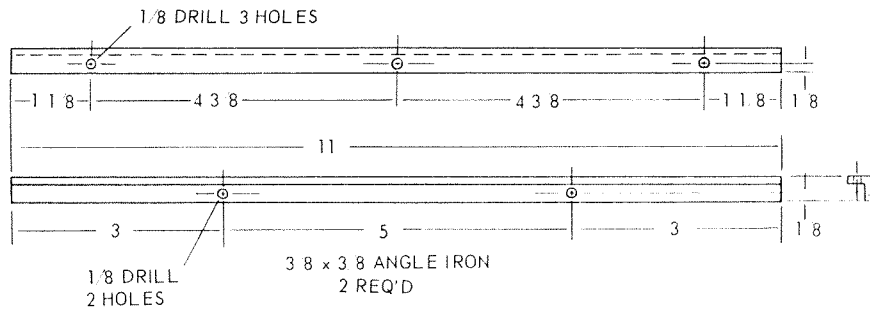
FOR THOSE SERIOUSLY INTERESTED IN THE GAME OF CHESS, THIS PROJECT PRESENTS THE CRAFTSMAN WITH SOME FASCINATING MACHINING AND TURNING PROBLEMS. TABLE IS MADE OF BIRCH AND WALNUT SQUARES ON A PLYWOOD BACKING.



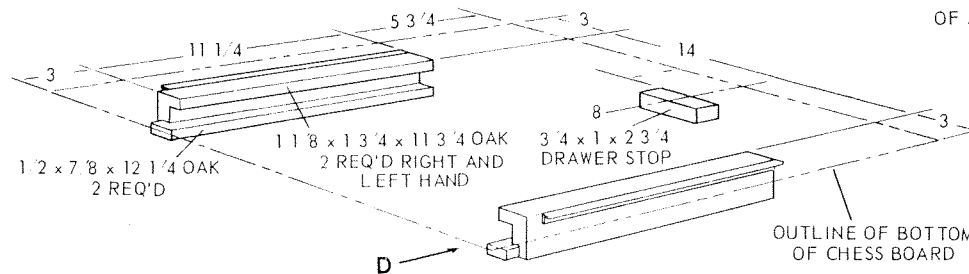
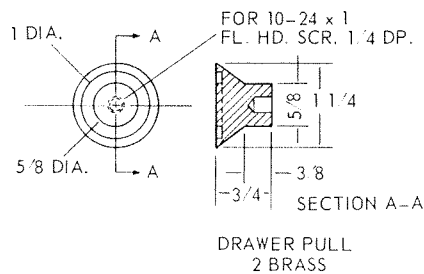
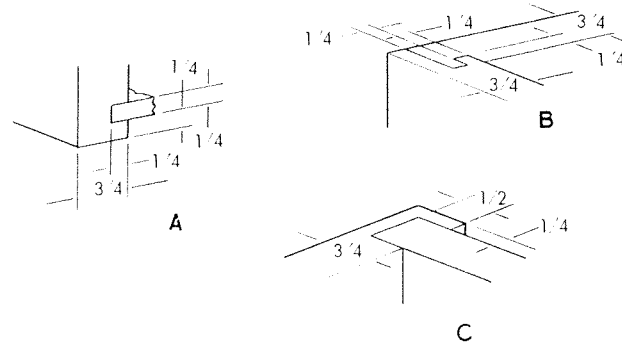
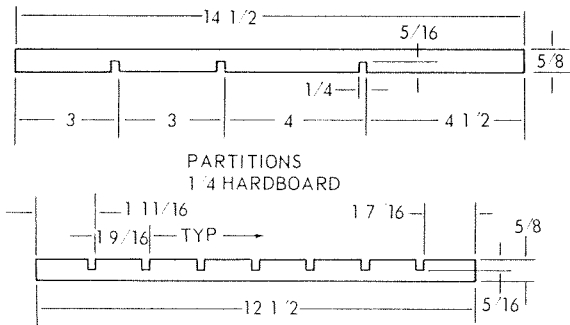
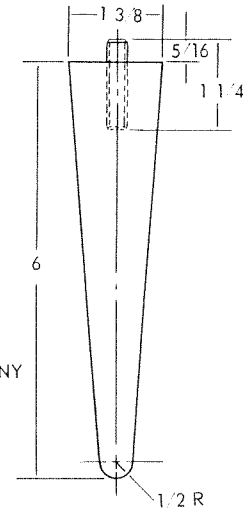
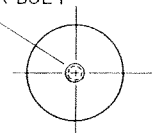
CHESS PIECES ARE TURNED FROM BRASS AND ALUMINUM BAR STOCK. IRREGULAR TOP SECTIONS MAY BE SHAPED WITH A BAND SAW, FILE AND BELT SANDER.

MODERNISTIC CHESS SET
(Sheet 2)

FINISH CHESS BOARD WITH SEVERAL COATS OF SPRAYED LACQUER. POLISH TO A SMOOTH SURFACE. AFTER POLISHING THE CHESS PIECES, SPRAY WITH LACQUER. ADD FELT BOTTOMS TO PROTECT PLAYING SURFACE.



5/16-18 HANGER BOLT



VIEW IN DIRECTION OF ARROW D

