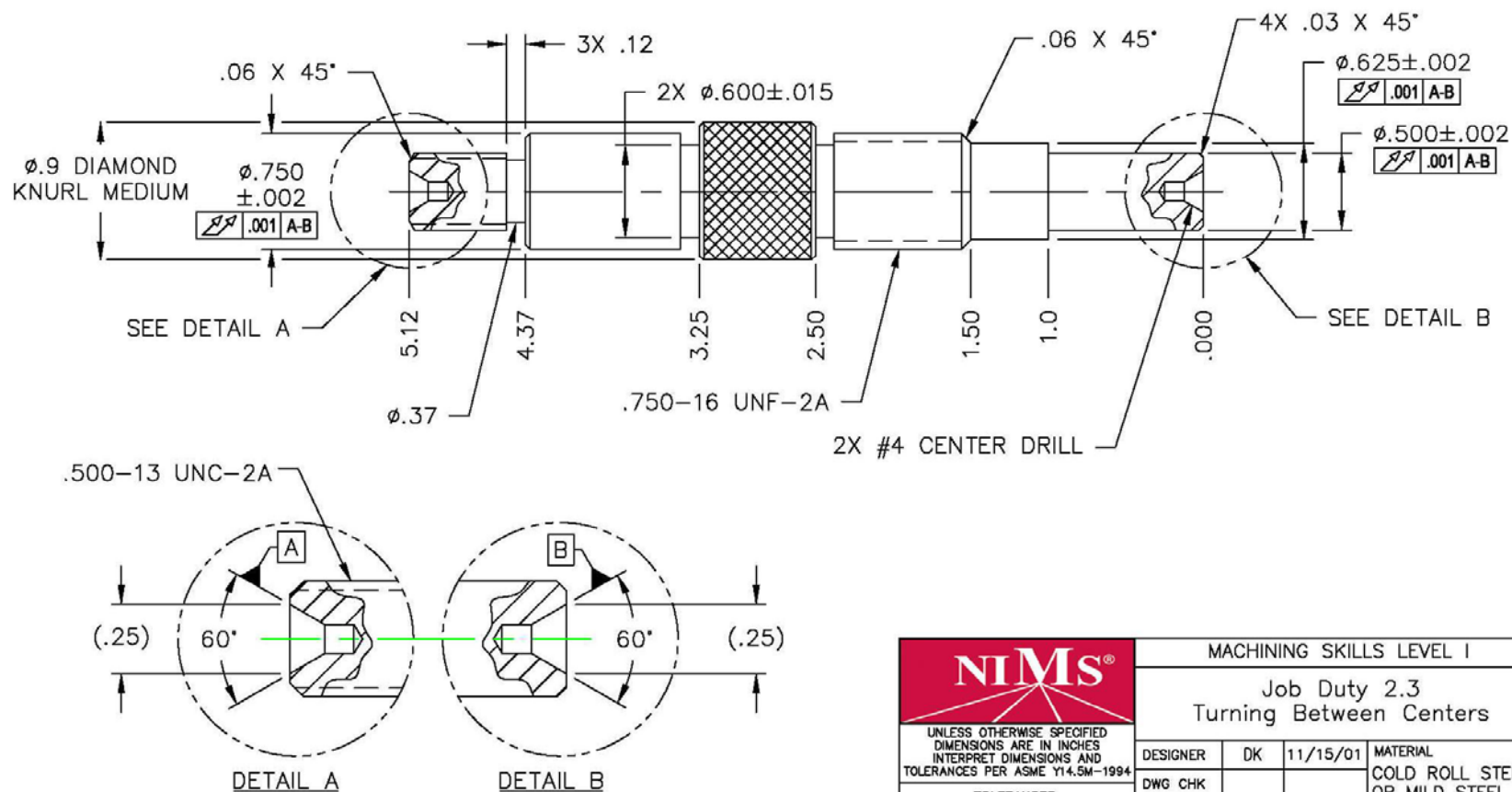


NOTES:

1. FINISH ALL OVER TO $\sqrt{125}$
2. BREAK ALL SHARP EDGES .015 MAX
3. UNLESS OTHERWISE SPECIFIED,
ALL COAXIAL DIAMETERS $\sqrt{.010}$ A-B

REVISIONS			
REV	DESCRIPTION	DATE	APPROVED
A	UPDATED DRAWING AND TITLE BLOCK	3/7/05	LW



DO NOT SCALE DRAWING

<p>UNLESS OTHERWISE SPECIFIED DIMENSIONS ARE IN INCHES INTERPRET DIMENSIONS AND TOLERANCES PER ASME Y14.5M-1994</p> <p>TOLERANCES .X $\pm .032$.XXX $\pm .005$.XX $\pm .015$ ANGLES $\pm 1 \text{ DEG.}$ FRACTIONS $\pm 1/64$</p>		MACHINING SKILLS LEVEL I	
		Job Duty 2.3 Turning Between Centers	
DESIGNER	DK	11/15/01	MATERIAL
DWG CHK			COLD ROLL STEEL OR MILD STEEL
DWG APPD			
SCALE	FULL	DWG.#98601 I	SHEET 1 OF 1

NIMS PROCEDURAL REQUIREMENTS

1. SUBMIT THIS PRINT AND WORKPIECE ALONG WITH THE PERFORMANCE AFFIDAVIT FOR EVALUATION